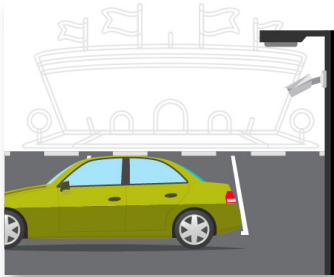


# USE CASE BANNED INDIVIDUAL

## Safe Stadiums

### Operational View



#### DETECT

##### KNOWN PERSON IDENTIFIED

Using an existing database, an automatic license plate reader recognizes a banned individual's vehicle entering the stadium parking lot and alerts stadium operations.



#### ANALYZE

##### MOVEMENT TRACKED

Using a watch list, the individual is confirmed as being banned and using appearance search their movements are automatically tracked as they approach the stadium.



#### COMMUNICATE

##### NOTIFICATION COMMUNICATED

The nearest entry gate security personnel are notified with an alert and an image of the individual.



#### RESPOND

##### INCIDENT MANAGED AND REPORTED

Stadium operations monitors the situation via video and the security personnel prevent the individual from entering. An incident report is logged with relevant data.

### Technology View



#### DETECT

- Avigilon Camera
- License Plate Recognition
- Avigilon Control Center
- Radio Alert



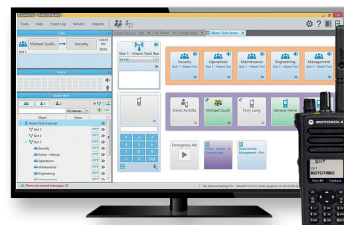
#### ANALYZE

- Avigilon Cameras
- Avigilon Control Center
- Watchlist
- Focus of Attention
- Radio Alert



#### COMMUNICATE

- WAVE PTX Broadband Push-To-Talk
- Radio Communications
- Dispatch



#### RESPOND

- Control Room Solutions

Motorola Solutions Ltd. Nova South, 160 Victoria Street, London, SW1E 5LB, United Kingdom.

Availability is subject to individual country law and regulations. All specifications shown are typical unless otherwise stated and are subject to change without notice.

MOTOROLA, MOTO, MOTOROLA SOLUTIONS and the Stylized M Logo are trademarks or registered trademarks of Motorola Trademark Holdings, LLC and are used under license. All other trademarks are the property of their respective owners. ©2020 Motorola Solutions, Inc. All rights reserved. EMEA (10-20)