

USE CASE

MACHINE MONITORING & ALERTS

Safe Manufacturing

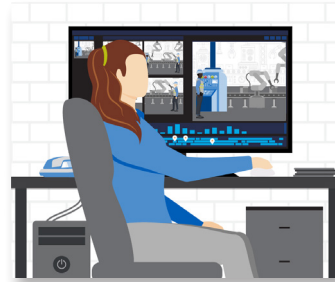
Operational View



DETECT

MACHINE ALERT ACTIVATED

Machine failure alert on production line automatically triggers an alert to the line supervisor.



ANALYZE

PRODUCTION MONITORED

Operational staff use cameras to monitor the situation and evaluate how the issue is affecting overall production.



COMMUNICATE

NOTIFICATION COMMUNICATED

After initial alert, the line supervisor creates work order ticket for maintenance and communicates directly with the plant manager. An All Call notification is sent to other departments notifying them of a production delay.



RESPOND

ISSUE RESOLVED MINIMAL DOWNTIME

Maintenance replaces a part during the next shift change to prevent breakage. Work order ticket closed.

Technology View



DETECT

- Radio Communications
- Machine Failure Alert Integration



ANALYZE

- Avigilon Video Security Cameras
- Avigilon Control Center
- Control Room Solutions



COMMUNICATE

- Radio Communications: Voice & Multimedia
- WAVE PTX: Broadband Push-to-Talk with Multimedia Sharing
- Dispatch Software
- Work Order Ticket Management



RESPOND

- Control Room Solutions
- Work Order Ticket Management

Motorola Solutions Ltd. Nova South, 160 Victoria Street, London, SW1E 5LB, United Kingdom.

Availability is subject to individual country law and regulations. All specifications shown are typical unless otherwise stated and are subject to change without notice. Camera footage is for illustrative purposes only.

MOTOROLA, MOTO, MOTOROLA SOLUTIONS and the Stylized M Logo are trademarks or registered trademarks of Motorola Trademark Holdings, LLC and are used under license. All other trademarks are the property of their respective owners. ©2021 Motorola Solutions, Inc. All rights reserved. EMEA (04-21)