

# USE CASE THEFT RESPONSE

Safe Hospitality

## Operational View



### DETECT

#### UNUSUAL SITUATION RECOGNISED

A vehicle is detected driving the wrong way in a parking lot. An alert is automatically sent to security directly on their device of choice and in the security operations room.



### ANALYSE

#### SUSPICIOUS ACTIVITY OBSERVED

Security teams instantly populate all nearby cameras to evaluate the situation and observe individuals attempting to break into vehicles. Nearest security resources are located.



### COMMUNICATE

#### SECURITY TEAMS AND PUBLIC SAFETY NOTIFIED

Security teams are dispatched to the appropriate location and situational intelligence is continuously provided to relevant teams and local public safety is directly notified.



### RESPOND

#### SITUATION CONTAINED AND REPORTED

Appropriate gates are closed off and the individual is detained. Video footage is compiled and delivered to local law enforcement. An incident report is filed with relevant information and shared with nearby sister-facilities.

## Technology View



### DETECT

- Fixed Video Security
- Avigilon Control Center
- Unusual Activity Detection
- Radio Alert



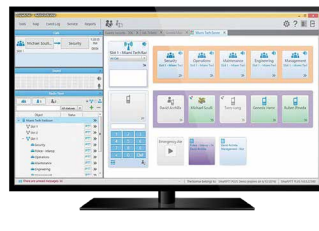
### ANALYSE

- Fixed Video Security
- Avigilon Control Center



### COMMUNICATE

- Radio Communications: Voice & Multimedia
- WAVE PTX: Multimedia Sharing & Broadband Push-to-Talk
- Dispatch Software



### RESPOND

- Control Room Solutions
- Critical Connect

Motorola Solutions Ltd. Nova South, 160 Victoria Street, London, SW1E 5LB, United Kingdom.

Availability is subject to individual country law and regulations. All specifications shown are typical unless otherwise stated and are subject to change without notice. Camera footage is for illustrative purposes only.

MOTOROLA, MOTO, MOTOROLA SOLUTIONS and the Stylized M Logo are trademarks or registered trademarks of Motorola Trademark Holdings, LLC and are used under license. All other trademarks are the property of their respective owners. ©2022 Motorola Solutions, Inc. All rights reserved. EMEA (06-22)