

# USE CASE DISRUPTIVE GUEST

Safe Hospitality

## Operational View



### DETECT

#### DISRUPTIVE GUEST REPORTED

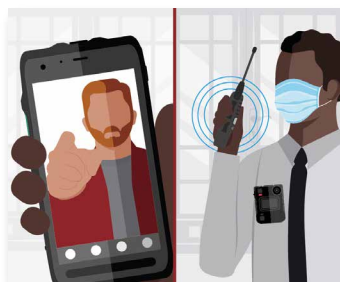
A staff member interacts with a disruptive individual and activates their body-worn camera to begin recording. An alert is automatically sent to appropriate staff directly on their device of choice and in the security operations room.



### ANALYSE

#### SITUATIONAL INTELLIGENCE GATHERED

Security teams in the operations room populate nearby cameras, including the body-worn camera and evaluate the situation to determine appropriate response.



### COMMUNICATE

#### SECURITY STAFF ENGAGED

Security teams are dispatched to the situation and receive intelligence including an image of the disruptive guest prior to their arrival on scene.



### RESPOND

#### SITUATION CONTAINED AND MITIGATED

Security confronts the individual to escort them off the premises. An incident report is securely documented with all relevant information and shared seamlessly with other nearby facilities.

## Technology View



### DETECT

- Body-Worn Cameras
- Radio Alert



### ANALYSE

- Fixed Video Security
- Avigilon Control Center
- Body-Worn Cameras



### COMMUNICATE

- MOTOTRBO ION/Two-Way Radio Communications
- WAVE PTX: Multimedia Sharing & Broadband Push-to-Talk
- Dispatch Software



### RESPOND

- Body-Worn Cameras
- Control Room Solutions

Motorola Solutions Ltd. Nova South, 160 Victoria Street, London, SW1E 5LB, United Kingdom.

Availability is subject to individual country law and regulations. All specifications shown are typical unless otherwise stated and are subject to change without notice. Camera footage is for illustrative purposes only.

MOTOROLA, MOTO, MOTOROLA SOLUTIONS and the Stylized M Logo are trademarks or registered trademarks of Motorola Trademark Holdings, LLC and are used under license.

All other trademarks are the property of their respective owners. ©2022 Motorola Solutions, Inc. All rights reserved. EMEA (06-22)