

USE CASE BANNED INDIVIDUAL

Safe Hospitality

Operational View



DETECT

INDIVIDUAL RECOGNISED

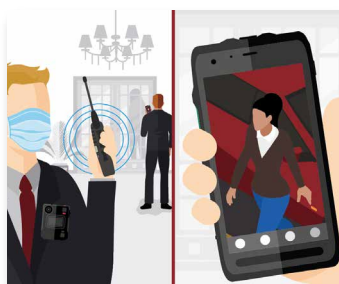
The license plate of a known disruptive individual is recognised entering a parking lot. An alert is automatically sent to appropriate security staff directly on their device of choice and in the security operations room.



ANALYSE

KNOWN INDIVIDUAL LOCATED

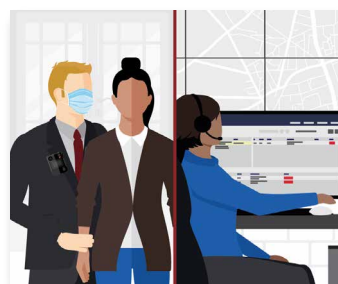
Nearby cameras are populated and security teams monitor the movement of the banned individual. Nearest security resources are located.



COMMUNICATE

SECURITY TEAMS DISPATCHED

Live video and intelligence is shared with security staff monitoring building entrances to intercept the individual and prevent them from entering the facility. Public Safety is also directly alerted for assistance.



RESPOND

SITUATION CONTAINED AND REPORTED

The banned individual is prevented from entering the facility and real-time intelligence is shared with public safety prior to their arrival. An incident report is securely logged with relevant information.

Technology View



DETECT

- Fixed Video Security
- Avigilon Control Center
- License Plate Recognition
- Radio Alert



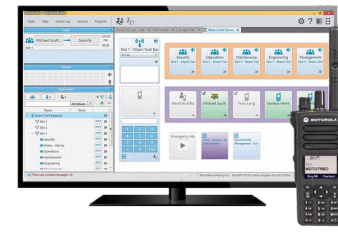
ANALYSE

- Fixed Video Security
- Avigilon Control Center



COMMUNICATE

- Radio Communications: Voice & Multimedia
- WAVE PTX: Multimedia Sharing & Broadband Push-to-Talk
- Dispatch Software



RESPOND

- Control Room Solutions
- Critical Connect

Motorola Solutions Ltd. Nova South, 160 Victoria Street, London, SW1E 5LB, United Kingdom.

Availability is subject to individual country law and regulations. All specifications shown are typical unless otherwise stated and are subject to change without notice. Camera footage is for illustrative purposes only.

MOTOROLA, MOTO, MOTOROLA SOLUTIONS and the Stylized M Logo are trademarks or registered trademarks of Motorola Trademark Holdings, LLC and are used under license.

All other trademarks are the property of their respective owners. ©2022 Motorola Solutions, Inc. All rights reserved. EMEA (06-22)