

# USE CASE ELEVATED TEMPERATURE DETECTION

Safe Utilities

## Operational View



### DETECT

#### ELEVATED TEMPERATURE DETECTED

A thermal camera at a service center checkpoint detects a field worker exhibiting indications of elevated body temperature and alerts the control room.



### ANALYZE

#### TEMPERATURE ALERT VERIFIED

The control room acknowledges the alert and identifies the employee exhibiting indications of elevated body temperature.



### COMMUNICATE

#### RESOURCES DISPATCHED

Agents at the security checkpoint are notified of the employee and a medical professional is dispatched to the checkpoint.



### RESPOND

#### SITUATION RESOLVED

The employee is discreetly isolated and a medical screening is conducted. The incident is logged with relevant data.

## Technology View



### DETECT

- Avigilon Video Security Cameras
- Avigilon Control Center
- Elevated Temperature Detection
- Orchestrate



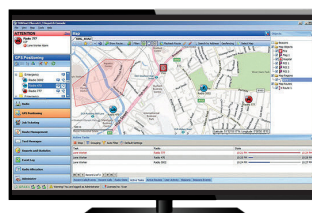
### ANALYZE

- Avigilon Video Security Cameras
- Avigilon Control Center



### COMMUNICATE

- WAVE PTX: Broadband Push-to-Talk and Multimedia Sharing
- Radio Communications: Voice & Multimedia
- Dispatch Software



### RESPOND

- Control Room Solutions

\*Camera footage is for illustrative purposes only

Motorola Solutions UK Ltd. Nova South, 160 Victoria Street, London, SW1E 5LB, United Kingdom.

MOTOROLA, MOTO, MOTOROLA SOLUTIONS and the Stylized M Logo are trademarks or registered trademarks of Motorola Trademark Holdings, LLC and are used under license. All other trademarks are the property of their respective owners. © 2022 Motorola Solutions, Inc. All rights reserved. (11-22)