

USE CASE COPPER THEFT AT A REMOTE SUBSTATION

Safe Utilities

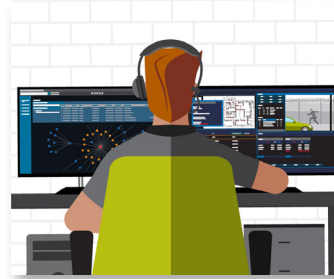
Operational View



DETECT

INTRUSION DETECTED AT REMOTE SUBSTATION

An intruder is detected getting out of a vehicle and jumping the fence of a remote substation. Security is directly notified and live video is transmitted over Private LTE to the control room.



ANALYZE

APPEARANCE TRACKED

Situational awareness maintained as intruder's appearance is automatically tracked across multiple cameras on and around the substation. Tracking continues even if they appear at another facility.



COMMUNICATE

RESOURCES DISPATCHED

Location and appearance of intruder is determined and shared across security teams to apprehend intruder. Security uses speaker on the camera to warn the intruder they've been detected.



RESPOND

FIRST RESPONSE DISPATCHED

Local police directly informed with video for immediate response. Incident is logged with relevant data to facilitate post investigation and prosecution.

Technology View



DETECT

- Avigilon Video Security Cameras
- Unusual Motion Detection
- Avigilon Unity Video
- Orchestrate



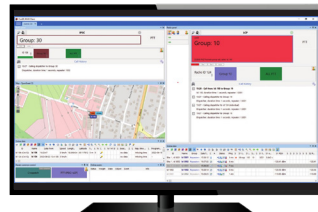
ANALYZE

- Avigilon Video Security Cameras
- Appearance Search
- Focus of Attention
- Avigilon Unity Video



COMMUNICATE

- WAVE PTX: Broadband Push-to-Talk and Multimedia Sharing
- Radio Comms: Voice & Multimedia
- Dispatch Software
- Purpose Built Broadband Devices



RESPOND

- Control Room Solutions
- Critical Connect

*Camera footage is for illustrative purposes only

MOTOROLA, MOTO, MOTOROLA SOLUTIONS and the Stylized M Logo are trademarks or registered trademarks of Motorola Trademark Holdings, LLC and are used under license. All other trademarks are the property of their respective owners. © 2023 Motorola Solutions, Inc. All rights reserved. (07-23) APAC