



IN-VEHICLE ROUTER BASED SOLUTIONS

KEEPING YOU CONNECTED ON THE ROAD



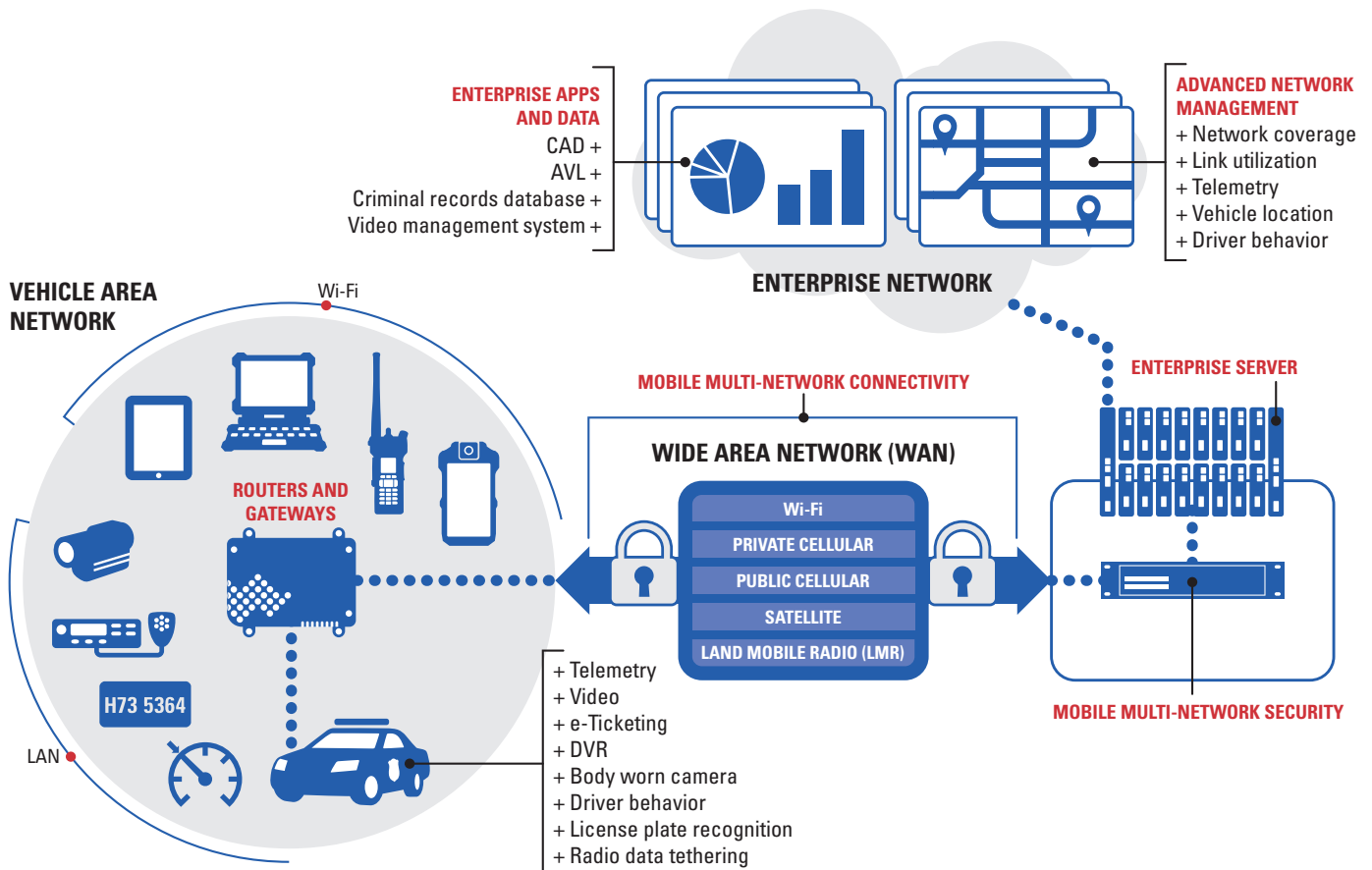
WITH REMOTE WORKING A CRITICAL ELEMENT OF PUBLIC SAFETY, MOBILE CONNECTIVITY IS VITAL.

Agencies need to ensure their teams have access to the same real-time data and applications on the move, as they do back at base. Accessing this information in vehicles is especially important as it allows first responders to remain connected and productive throughout a shift, while providing full visibility of assets so they can effectively coordinate operations.

IT'S ALL ABOUT INFORMATION FLOW

Vehicle routers keep first responders connected in vehicles so they can access real-time intelligence on the road. They provide a bubble of connectivity around the vehicle that allows a variety of equipment from laptops and tablets to in-vehicle and body-worn cameras to access the Internet. We call this bubble a vehicle area network (VAN) and the connectivity between the VAN and the enterprise network is what makes the crucial flow of information between the field and base possible. For public safety, this information flow can be a lifeline. Mobile connectivity

allows frontline teams to transmit and receive data securely in real time – for example video feeds, maps and criminal record databases. When needed they can also coordinate their response with other emergency services. Command can monitor the location and status of assets, access telemetry and see fleet information such as data on driver behavior. This two-way flow of information helps keep responders safe and effective.





CREATING THE VEHICLE AREA NETWORK

WITH MOBILE CONNECTIVITY, THE VEHICLE BECOMES A FULLY OPERATIONAL OFFICE AND COMMAND CENTER. TO HELP YOU MAKE THAT TRANSITION, WE OFFER A COMPLETE AND SECURE END-TO-END SOLUTION – INCLUDING ROUTERS, DEVICE AND FLEET MANAGEMENT, TELEMATICS AND TRACKING, AND SUPPORT SERVICES.

ROUTERS

Routers are the gateway that connects devices securely to the VAN via bluetooth, WiFi and or ethernet, and the VAN securely to the Enterprise Network. We leverage Sierra Wireless AirLink® technology with a choice of LTE-Advanced Pro vehicle routers built to provide secure, always-on connectivity for mission critical applications in public safety.

MOBILE MULTI-NETWORK SECURITY

Mobile Multi-Network Security is a mobile-optimized VPN solution that keeps data safe in transit. It enables secure communications over the network from the vehicle to the enterprise network, and back again.

ADVANCED NETWORK MANAGEMENT

Advanced Network Management makes it easy to deploy and upgrade your routers remotely, provides network information, and enables remote monitoring and management of your network connected devices to ensure optimum performance.

TELEMATICS AND TRACKING GATEWAYS

Telematics and tracking gateways are connectors providing solutions for vehicle tracking, telematics and many other location-aware applications and services.

SUPPORT SERVICES

Provides you with technical support to troubleshoot problems and hardware repair to keep you and your in-vehicle routers and devices connected and performing at the highest level.



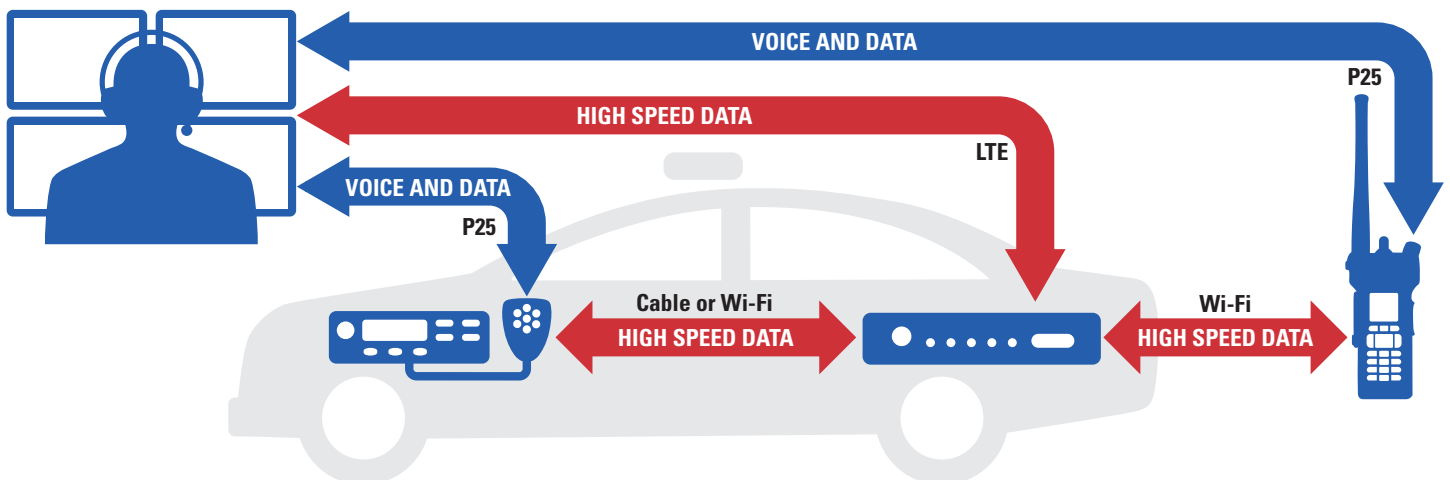
ROUTERS: THE GATEWAY

Purpose built for vehicles, AirLink routers have been designed to resist extreme temperatures, spray and dust with an IP64 sealed design and a MIL-STD-810G rating, making them ideal for police, fire, emergency medical services and other public safety agencies.

Once connected using flexible mounting options and a highly sensitive roof-mounted antenna system, they provide a high capacity VAN with LTE-Advanced connectivity, paired with Gigabit Wi-Fi and Gigabit Ethernet in the vehicle. This enables access to multiple wireless networks, via the router, including public LTE, Public Safety broadband (FirstNet®) and 802.11ac Gigabit Wi-Fi. The routers simultaneously connect multiple devices in and around the vehicle, including laptops, tablets and video recorders. This drives a number

of mission-critical applications, including video upload and live streaming, and access to remote databases such as record management systems.

Another important feature is Data Modem Tethering, enabling selected APX radios to offload non-critical data to a cellular or public safety broadband network via the router. The P25 system is designed to always prioritize voice calls and mission-critical data (such as GPS). That means ordinary data transmissions such as text messaging, radio updates or rekeying are not prioritized. When updates need to be pushed to your radios you may have to wait, especially if the network is busy. With Data Modem Tethering you can speed up those data transmissions by routing non-critical data over a mobile broadband network.





AIRLINK MP70

HIGH PERFORMANCE LTE-ADVANCED VEHICLE ROUTER

The MP70 offers Gigabit Wi-Fi and Gigabit Ethernet with up to 600 Mbps downlink and 150 Mbps uplink over LTE-Advanced Pro. It unites the fleet with the enterprise network and enables multiple devices and their applications to work simultaneously. The MP70 is a certified device that is FirstNet Ready™ with Band 14 support.

- Offers high performance vehicle area network (VAN)
- Provides connected vehicle awareness (telematics)
- Purpose built for vehicles
- Provides secure intelligent communications
- Network management in the cloud or in the enterprise data center

AIRLINK MG90

HIGH PERFORMANCE DUAL-LTE-ADVANCED VEHICLE NETWORKING PLATFORM

The MG90 is a high performance LTE-Advanced Pro vehicle multi-networking platform that offers dual LTE-Advanced Pro, Dual Concurrent Gigabit Wi-Fi and Gigabit Ethernet with extensions to Land Mobile Radio (LMR) and satellite systems. It's FirstNet Ready with Band 14 support.

- Selects best available network based on user-defined policies
- Seamless network handover and sub-second network switching
- Consolidated security with the AirLink Connection Manager (ACM)
- Remote, real-time network insight and control with the AirLink Mobility Manager (AMM)





KEEPING EVERYTHING SECURE: MOBILE MULTI- NETWORK SECURITY

AirLink routers provide device to enterprise data security for mission-critical applications and mobile assets in the VAN. With up to 10 concurrent VPN sessions, communications to multiple back-end systems are secure, keeping data safe in transit. In addition, remote authentication management allows enterprise-grade systems to control access to devices in the field.

For multi-network environments, the AirLink Connection Manager (ACM) delivers a complete end-to-end solution to securely connect people and mission-critical applications. The ACM securely extends the enterprise network to the vehicle. Designed to work with AirLink routers, it consolidates security onto a single platform for all connected devices and applications in the VAN.

BENEFITS INCLUDE:

- Always on VPN tunnels - No downtime or loss of communications, even when roaming between networks (cellular and/or Wi-Fi)
- Simplified deployments
- Enhanced management control over network access and mobile assets, and lower security costs
- Securely connects all in-field applications and mobile assets in and around the vehicle to the enterprise with FIPS 140-2 / AES 256 encryption



OPTIMIZING PERFORMANCE: ADVANCED NETWORK MANAGEMENT

Remote monitoring and management of your network connected devices is critical to ensuring optimal performance. We provide a choice of network management solutions. The AirLink Management Service is a cloud-based solution for the MP70 that makes it easy to deploy, monitor and upgrade your routers remotely. The AirLink Mobility Manager is for both the MP70 and MG90 and can be deployed in the cloud or on-premise (where cloud-based management is not an option).

AIRLINK MANAGEMENT SERVICE

The AirLink Management Service is a cloud-based network and asset management solution for the MP70. It allows remote monitoring and management of the devices on your network, as well as variables such as signal strength, network technology and location to ensure optimum connectivity. Dashboards display up-to-date views of the entire deployment, and custom alerts can be set-up to monitor and report critical events, helping to increase efficiency and prevent downtime.

AIRLINK MOBILITY MANAGER

This solution enables simplified, remote and real-time mass configuration, control and troubleshooting of all in-vehicle AirLink routers, connected mobile assets and mission critical applications. Available in the cloud or on-premise (where cloud-based management is not an option), it includes a virtual dashboard with an up-to-date view of all routers, and delivers a continuous stream of real-time network data so you can monitor and analyse the behavior of devices and device parameters as they occur.

TELEMATICS AND TRACKING

TRACKING YOUR VEHICLES: GENX TELEMATICS AND TRACKING

Keeping track of the location and status of your mobile resources in real-time helps ensure fast, efficient responses and efficient operations. We provide wireless location-enabled equipment so you can track vehicles and take advantage of telematics for monitoring and management of your fleet. The GenX solutions are highly configurable and designed for a wide variety of requirements, location-aware applications and services.





ESSENTIAL SERVICES FOR IN-VEHICLE ROUTERS

SUPPORT WHEN YOU NEED IT

Essential Services includes hardware repair and provides you with technical support for troubleshooting problems. The service packages also have renewal options for extending coverage and support to give you peace of mind that the in-vehicle router solution will always be up to date and performing at the highest level.

RELY ON EXPERT REPAIR

State-of-the-art diagnostics equipment, repair tools and replacement parts helps ensure your vehicle routers are back in operation quickly. All vehicle routers are returned to factory specifications and updated with the latest firmware.

ACCESS TECHNICAL SUPPORT

Experienced technologists are available to help isolate and resolve any issues you may have with your in-vehicle based router solution.

SOFTWARE UPDATES AND EXTENDED WARRANTY

Ensure continuous security, performance and enhanced functionality of your in-vehicle router solution by getting access to the latest software releases and updates.

MP70 AND MG90 ESSENTIAL SERVICES	
Coverage Period	3 or 5 Years
Hardware Repair	Included
Software Updates	Included
Remote Technical Support	24 x 7 for Opening Cases 8 x 5 (local time) for Tech Support
Device Management (Cloud-Based)	Included
Essential Renewal	2 Year Extension (Only for 3 Year Essential Service)

For more information please visit:
www.motorolasolutions.com/vehiclerouters



Motorola Solutions, Inc. 500 West Monroe Street, Chicago, IL 60661 U.S.A. motorolasolutions.com

MOTOROLA, MOTO, MOTOROLA SOLUTIONS and the Stylized M Logo are trademarks or registered trademarks of Motorola Trademark Holdings, LLC and are used under license. Sierra Wireless, the red wave, and Airlink are registered trademarks of Sierra Wireless. All other trademarks are the property of their respective owners. © 2019 Motorola Solutions, Inc. All rights reserved. 03-2019