

# LEX L10 MISSION CRITICAL LTE HANDHELD





**NEXT GENERATION LTE DEVICE FOR RUGGED ENVIRONMENTS**

# LEX L10 MISSION CRITICAL LTE HANDHELD

The Motorola Solutions LEX L10 LTE handheld is a purpose built tool designed to help first responders and people operating in tough environments work safer, smarter and faster. It addresses the unique requirements of heavy industries and public safety agencies by delivering mission critical capabilities not available on consumer grade smartphones.

## MISSION CRITICAL PERFORMANCE

The sleek LEX L10 is ergonomically designed for one-handed operation with a no-slip grip texture on the removable battery cover and a 4.7-inch HD touch screen. It includes best-in-class audio performance with dual 1 Watt front-facing speakers, tri-microphone noise and echo cancellation and a dedicated, tactile push-to-talk (PTT) button for fast voice collaboration. With its high-capacity battery, you can be sure the LEX L10 will last the entire shift. When it does need charging, its compatible high-rate charger can restore the battery from zero to 80% in only 60 minutes.

The LEX L10 is secured with FIPS 140-2 Level 3 hardware encryption, Security Enhanced (SE) Android OS and Secure Boot to deter cyber threats. Operate your radio in covert mode by securely touch-pairing it with the LEX L10 via Mission Critical Bluetooth® in order to remotely control the radio's zones, channels, volume and activate an emergency. The LEX L10 can also be paired with Mission Critical Bluetooth wireless accessories for easy push-to-talk capability.

## EXCEPTIONAL CONNECTIVITY

Whether it's data, photos, video or voice, the LEX L10 Mission Critical Handheld is designed to bring it to you quickly, reliably and securely. In the field, the LEX L10 delivers exceptional connectivity to 4G LTE. The LEX L10 can also connect to other networks, including carrier 3G/UMTS and Quad Band GSM. It also supports IMS/VoLTE and IMS/SMS services on 4G LTE in addition to circuit switch voice and SMS.

**The LEX L10 Mission Critical LTE Handheld operates in:**

**4G LTE Bands:** 3, 4, 5, 7, 8, 20, 26, 28

**3G/UMTS Bands:** 1, 2, 4, 5, 8

**Quad Band GSM:** 850 MHz, 900 MHz, 1800 MHz, 1900 MHz

**802.11 a/b/g/n Wi-Fi and Miracast**

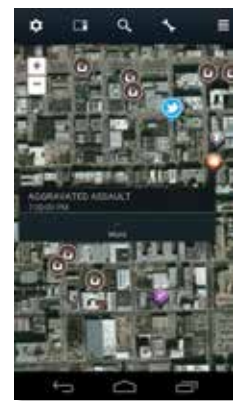
## UNIFIED DATA: INTELLIGENT APPLICATIONS DELIVER MISSION CRITICAL INFORMATION

The LEX L10 supports a suite of intelligent applications designed to leverage information in the field. Motorola Solutions' applications are purpose-built to facilitate situational awareness, improve workers efficiency and keep personnel safe. These applications aid efficiency improvements by automating manual processes, maximising report accuracy and minimising processing time for workers. As a result, staff can spend more time on the job and less time doing paperwork. Workers see one view based on common location, tracking, presence, video feeds and other data sources to enable better collaborative actions. Network managers have visibility and control across unified communications network, applications and fleet of devices."

- Real-Time Video Streaming
- Computer Aided Dispatch (CAD)
- Broadband Push-to-Talk
- Query and Messaging
- Email and Web
- Data Capture
- Identity Verification
- Incident Command
- Evidence Collection
- Report Writing
- Mapping and Navigation



**Mobile Intelligence Client - in a single intuitive interface**



**Command Central Inform for layer-based mapping of people, resources, events, alerts and developing situations**



**WAVE Work Group Communications for seamless voice interoperability across Land Mobile Radio (LMR) systems and broadband networks**







**Real-Time Video Intelligence for streaming of live video and camera remote control**



# THE ART OF MISSION CRITICAL DESIGN

The LEX L10 Mission Critical LTE Handheld delivers an exceptional combination of rugged hardware, powerful software and broadband connectivity.

<p>Front 2MP Camera</p> <p>Ambient Light / Proximity Sensors</p> <p>Textured PTT Button</p> <p>Up/Down Volume Buttons</p> <p>4.7" Capacitive Touch Screen</p> <p>Front Bottom Microphone</p> <p>Dual 1W Front-Facing Speakers</p>		<p>Recessed Power/Mode Button</p>  <p>Rubberized Top Surface</p>	<p>3.5 mm Headphone Jack</p>
<p>Rubberized Bottom Surface</p>  <p>Micro USB Port</p>		<p>Rear 8MP Camera</p> <p>Mission Critical Bluetooth</p> <p>High-Output LED Flash</p> <p>Rear Microphone</p> <p>Removable Battery Cover</p> <p>No-slip Grip Texture</p> <p>Ruggedized Construction</p> <p>Charger Docking Port</p>	

## LEX L10 ACCESSORIES

### QUICK-ACCESS LEATHER HOLSTER

Meets public safety specifications and provides quick "eyes-off" access to volume and dedicated push-to-talk buttons.



### DESKTOP CRADLE

Withstands spills, drops and vibration making it suitable for both the desktop and a command vehicle simultaneous charging and operation.. A USB 2.0 interface enables quick data synchronization with a desktop PC.



### IMPACT-RATED VEHICLE CRADLE

Securely holds the LEX L10 and protects against impact while providing access to the display and buttons. Includes a rapid-charge vehicle adapter to quickly replenish the battery.





# MOTOROLA LEX L10 MISSION CRITICAL LTE HANDHELD

## LEX L10

The LTE handheld device designed for extreme environments. Purpose built to support the toughest mission-critical roles in public safety, mining and commercial industries.

## 4G/LTE

Release	3GPP Release 9
Bands	3, 4, 5, 7, 8, 20, 26, 28
Output Power	23 dBm +/- 2 dB (UE power class 3)
Bandwidth	Up to 20 MHz Broadband data throughput depends on network conditions

## 3G

Standards	HSPA +/UMTS
Bands	1, 2, 4, 5, 8

## 2G

Standards	GSM/GPRS/EDGE
Frequencies	850 MHz, 900 MHz, 1800 MHz, 1900 MHz

## WI-FI

Operating Band	2.4 GHz, 5 GHz
Standards	802.11 a/b/g/n

## PERSONAL AREA NETWORKS

Bluetooth	Bluetooth 4.0 Low Energy (LE) + Enhanced Data Rate (EDR) Mission Critical Wireless Bluetooth Max throughput 2.1 Mbps A2DP Stereo Profile
-----------	---

## GPS

Location Services	Standalone GPS Assisted GPS (aGPS)
-------------------	---------------------------------------

## DEVICE MANAGEMENT

Remote management and configuration	Supports OMA-DM (Open Mobile Alliance Device Management)
-------------------------------------	--

## VIDEO AND IMAGING

Supported Formats	H.263, H.264, MPEG-4 SP, VP8, JPEG (.jpg), GIF (.gif), PNG (.png), BMP (.bmp), WebP (.webp) Formats supported for playback, streaming and recording
Supported File Types	3GPP (.3gp), MPEG-4 (.mp4), WebM (.webm), (.mkv)
Video Recording Quality	1080p HD up to 30 frames per second (fps)

Note: Video and images are time stamped for evidence documentation

## AUDIO

Supported Formats	MP3, WAVE, AAC, AMR-NB, AMR-WB, FLAC, MIDI, Vorbis
Supported File Types	MP3 (.mp3), WAVE (.wav), 3GPP (.3gp), MPEG-4 (.mp4, m4a), ATDS raw AAC (.aac), MPEG-TS (.ts), FLAC (.flac), MIDI (.mid, .xmf, .mxmf), RTTTL/RTX (.rtttl, .rtx), OTA (.ota), iMelody (.imy), Ogg (.ogg), Matroska (.mkv)
Output	Dual 1 Watt Front-Facing Speakers, 106 dB Sound Pressure Level (SPL) 3.5 mm audio jack (stereo) Bluetooth (A2DP stereo)
Input	Triple Noise and Echo Cancelling Microphones

## HARDWARE

Processor	2.3 GHz Quad Core Processor Qualcomm MSM8974AB
Display	4.7" 720p HD (720X1280) Capacitive, touch screen
Memory	2 GB RAM 16 GB eMMC Expandable to 64GB with microSD™ card
Camera	Rear 8MP Camera Auto Focus High-Output LED Flash Digital Zoom Front 2MP Camera
Sensors	Proximity Sensor Ambient Light Sensor Accelerometer Barometer E-Compass
Ports	USB 2.0 High-Speed 3.5 mm Audio Jack (stereo) Accessory/Charging Port
Battery	Standard - 2280 mAh High Capacity - 4560 mAh

## PHYSICAL

Dimensions (H x W x D)	5.62 x 2.85 x .547 in 143 x 72.6 x 13.9 mm
Weight	195 g including standard battery
Durability	Continues to run after multiple drops to concrete from a height of 48 inches (121 cm)  Drop tested using MIL-STD-810G Method 516.6, Procedure IV  IP67 (1 meter water immersion up to 30 minutes)
Operating Temperature	14°F to 131°F (-10°C to +55°C)
Storage Temperature	-22°F to 149°F (-30°C to +65°C)

## SOFTWARE

Operating System	Android™ KitKat 4.4.4
Messaging	SMS/MMS Email (Corporate Sync, POP3, IMAP, Push Email)
Web	Standard AOSP Browser

## QUICK ACCESS LEATHER HOLSTER

Dimensions (H x W x D)	5.7 x 3.5 x 2.0 in (145 x 90 x 50 mm)
------------------------	--

## GENERAL ACCESSORIES

	Desktop Cradle	Impact-rated Vehicle Cradle
<b>PHYSICAL</b>		
Dimensions (H x W x D)	6.0 x 5.0 x 3.5 in	Z
(152 x 128 x 89 mm)	6.1 x 3.0 x 2.2 in	
(155 x 76 x 56 mm)		
Weight	12.8 oz (363 g)	4.8 oz (135 g)
<b>ENVIRONMENTAL SPECIFICATION</b>		
Operating Temperature	32°F to 113°F (0°C to +45°C)	-4°F to 131°F (-20°C to +55°C)
Storage Temperature	-40° F to 158°F (-40°C to 70°C)	-40° F to 185°F (-40°C to +85°C)
Humidity	95% at 113°F (45°C) for 8 hours (non-condensing)	95% at 131°F (55°C) for 8 hours (non-condensing)
<b>DURABILITY</b>		
Salt Fog	Yes	Yes
Vibration	Yes	Yes
Drop	Yes	Yes
Shock (Functional)	Yes	Yes
Shock (Crash Hazard)		Yes, MIL-STD-810G, 75G impact
ESD	Yes	Yes
Solar Radiation		Yes
Liquid Resistance	Yes	Yes
<b>SAFETY REGULATORY</b>		
Electrical Safety	US: UL60950	US: UL60950
EMI/RFI	FCC part 15, Subpart B, Class B	
ANSI C63.4 2009	FCC part 15, Subpart B, Class B	
ANSI C63.4 2009		
Flammability	ANSI/UL-94 and ASTM Standards	ANSI/UL-94 and ASTM Standards
<b>ELECTRICAL</b>		
Power Supply	External power supply input 100-240VAC output 5.0VDC 1.2A	12V-24V, 5.0VDC, 1.2A
Power Input	5.0 VDC, 1.2A	5.0 VDC, 1.2A
DC Output	5.0VDC	5.0VDC
Power On	With device insertion	With device insertion
<b>OPTIONAL ACCESSORIES</b>		
Vehicle Ram® Mount Kit		



Specifications subject to change.

**For more information, please visit: [www.motorolasolutions.com.au/LEXL10](http://www.motorolasolutions.com.au/LEXL10)**

Motorola Solutions Limited, 10 Wesley Crt, Tally Ho Business Court, East Burwood, VIC 3151, Australia.

MOTOROLA, MOTO, MOTOROLA SOLUTIONS and the Stylized M Logo are trademarks or registered trademarks of Motorola Trademark Holdings, LLC and are used under license. All other trademarks are the property of their respective owners. ©2015 Motorola, Inc. All rights reserved. R3-36-1000

