



DCX9000 Video management

Integrating powerful video management software with DCX9000 Dispatch Console for DIMETRA™

DCX9000 Video Management enables dispatch console operators to view and manage video streams from fixed video cameras directly from the DCX9000 Dispatch Console for DIMETRA.

The DCX9000 Dispatch Console can be integrated with the Avigilon Unity Video Management System (VMS). This enables dispatch console operators to view and manage video streams from any camera connected to the DCX9000 Dispatch Console. Once a camera object has been created in the VMS a number of video capabilities are available to the DCX9000 Dispatch Console operator.

Key features



Camera icons on map

The cameras are represented by icons on a layer of the dcx9000 client map, showing the locations of each camera.



One click access to live video

Watch live video simply by clicking on the icon for any camera placed on the DCX9000 client map.



Video events in browser

Video event notifications such as license plate recognition (LPR) are received directly in the DCX9000 browser.



Share snapshots

Create a snapshot from any video stream and share instantly from the DCX9000 dispatch console by dragging and dropping into a telegram message.



Presets and PTZ control

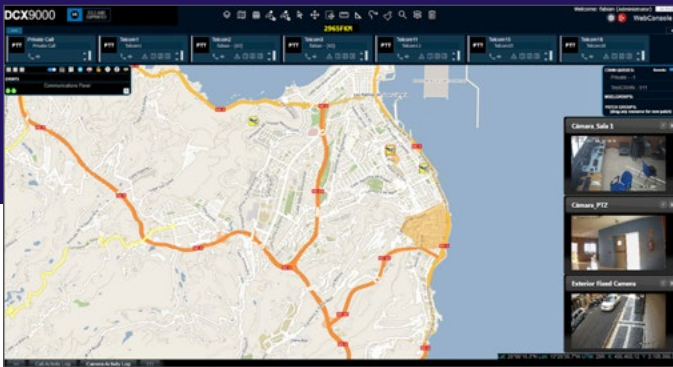
Apply pre-configured settings (presets) to a camera and pan, tilt and zoom (PTZ) a camera directly from the DCX9000 dispatch console.

Benefits

- Empower your dispatch console operators with live video to better evaluate events and verify potentially dangerous situations and mobilise the right field resources
- Decrease the cognitive load and reduce the stress on your operators by combining dispatch communications and video management capabilities in the same web browser based application
- Maximize your investment by integrating best in class DIMETRA TETRA radio communications with best in class Avigilon video management and security
- Utilise your existing fleet of video cameras with avigilon unity video.



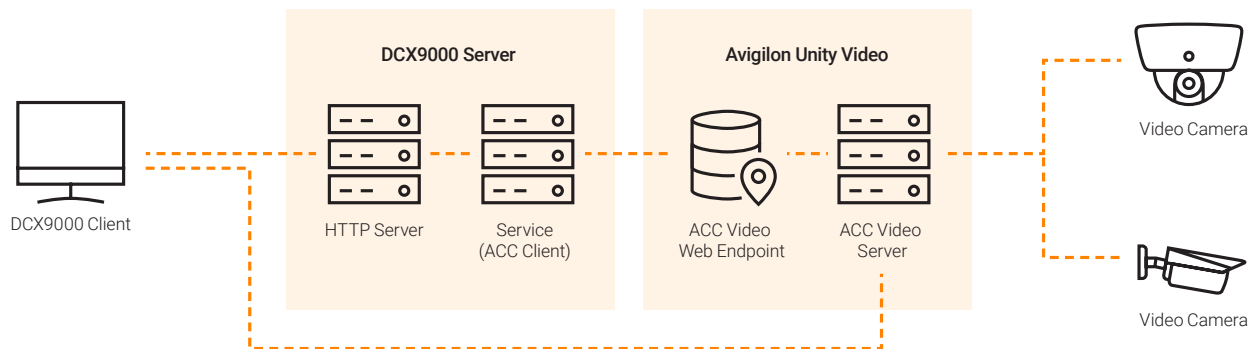
Tiled view



Live video



Integration architecture



Requirements

- DCX9000 Dispatch Console for DIMETRA (Release 1.4 or later).
- DCX9000 Avigilon integration license per console position.
- Avigilon Control Center (ACC) 7 server software.
- Avigilon video analytics enabled cameras are required.

To learn more, visit: www.motorolasolutions.com/DCX9000



Motorola Solutions UK Limited, Nova South, 160 Victoria Street, London, SW1E 5LB motorolasolutions.com

Availability is subject to individual country law and regulations. All specifications shown are typical unless otherwise stated and are subject to change without notice. Whilst care has been taken to ensure the accuracy of the information contained in this brochure, Motorola Solutions retains the right to make changes at any time without notice.

MOTOROLA, MOTO, MOTOROLA SOLUTIONS and the Stylized M Logo are trademarks or registered trademarks of Motorola Trademark Holdings, LLC and are used under license. All other trademarks are the property of their respective owners. © 2023 Motorola Solutions, Inc. All rights reserved. 01-2024 [MW05]