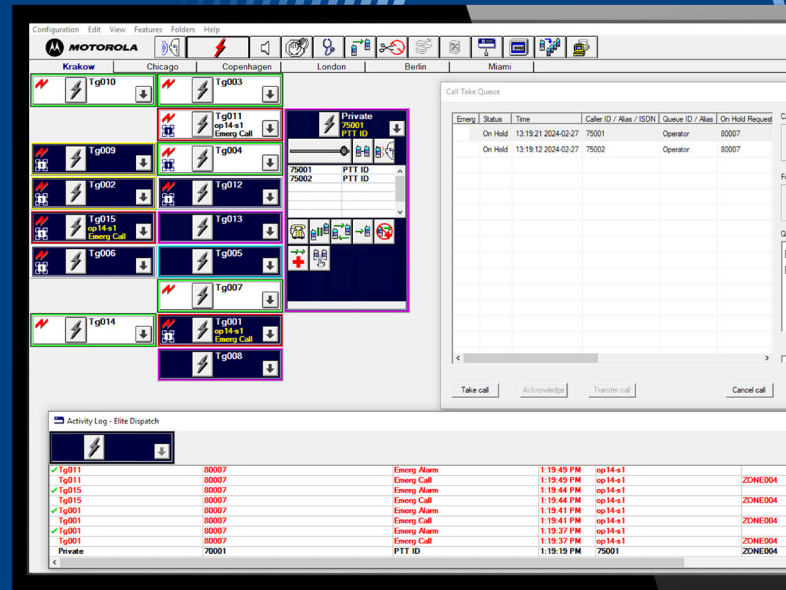


# DIMETRA MCC 7500C Dispatch Console



## Mission critical dispatch communications

Keep your first responders connected and informed when it matters most with the DIMETRA MCC 7500C Dispatch Console. Turn your control room into a communications centre, which first responders and field staff can rely on for the information they need, when they need it most. The MCC 7500C Dispatch Console enables effective and reliable voice communications and dispatch capabilities on your DIMETRA TETRA network.

## The right information, right away

The right information can prove crucial to first responders in identifying and neutralising threats to themselves and others before a situation escalates and results in tragedy. However, with the explosion of available data comes the increasingly difficult task of managing and communicating this information to those who need it.

The MCC 7500C Dispatch Console offers your dispatchers the mission critical communications capabilities they need to help coordinate a response to an incident and provide the necessary mission-critical information to ensure the safety of your first responders and field staff across your DIMETRA network.

The MCC 7500C Dispatch Console helps to ensure your dispatch centre can provide the right information, right away.

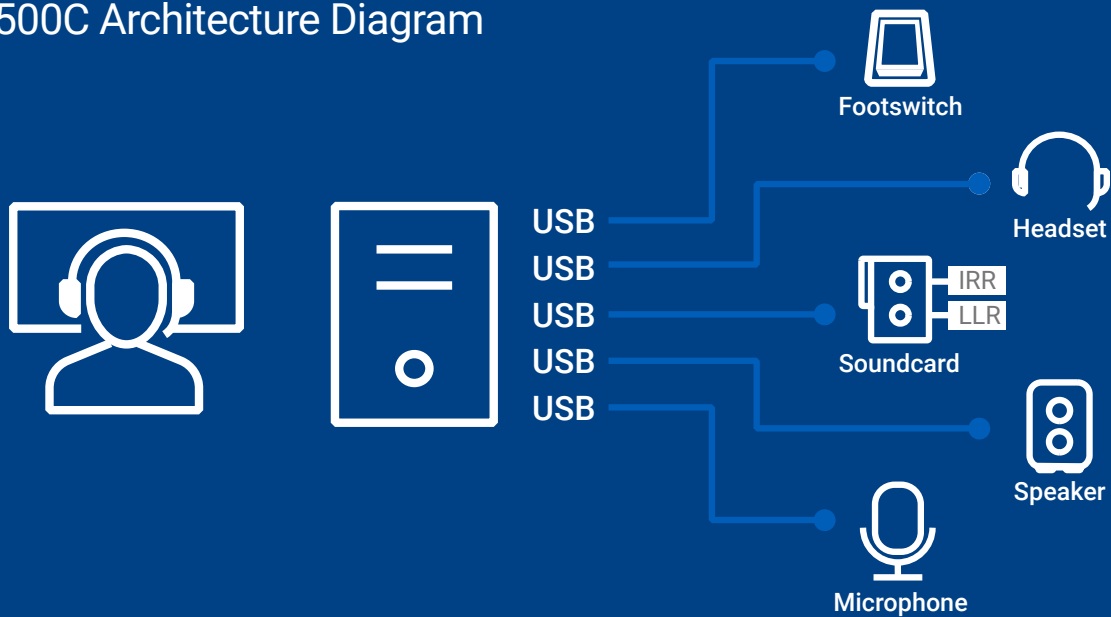
## Effective Support, made simple

Give your dispatchers the tools they need to effectively and effortlessly communicate critical information to responders in the field. The MCC 7500C Dispatch Console with its Elite dispatch application software provides dispatchers with an intuitive means to organise resources, coordinate a response and communicate valuable information.

The easy to use Elite dispatch application Graphical User Interface (GUI) look and functionality, allows dispatchers to quickly adapt to a new system with a short learning curve and minimal training.

Purpose-designed workflows with minimal click-throughs, critical resource information displays and contextual right-click menus help your dispatch operations become more streamlined and effective, and your dispatchers more efficient and productive with the Elite dispatch application.

## MCC 7500C Architecture Diagram



### The information you need every time

First responders rely heavily on dispatch for support. They need to be confident that your dispatchers can always give the right information and coordination when an emergency arises. The inherent reliability and security of the DIMETRA MCC 7500C Dispatch Console ensures first responders and dispatchers stay connected with best-in-class audio quality.

You can rely on the MCC 7500C's smart voice prioritisation and intelligent audio routing capabilities to ensure the right information always gets through. The MCC 7500C's continuous link and resource polling gives your dispatchers the confidence that once connected they stay connected.

### Scale up your system, not your costs

The MCC 7500C Dispatch Console helps keep your costs down with flexible servicing options. The software-based system, managed from a centralised, single point of contact, reduces the time and skills needed for updates while the scalable platform lets your system grow as much or as little as you need.

### Leverage a shared system

With security groups, organisations can take advantage of a shared DIMETRA system through agency partitioning while ensuring security and control of agency data and operating procedures. Secure partitions protect agency data from access or alteration by other agencies sharing the same system. Individual agencies have their own security credentials and maintain control over their own dispatch console resources.

### Direct connection to the radio network

The MCC 7500C Dispatch Console connects directly to the radio system's IP transport network without using gateways or interface boxes for better audio quality. The MCC 7500C functions as an integrated component of the entire DIMETRA radio system, enabling full participation in system level features such as agency partitioning.



## Easy to manage

The MCC 7500C Dispatch Console does not require separate configuration or performance management equipment. The console system is configured and managed by the DIMETRA system's configuration manager, fault manager and performance reporting applications providing the user with a single point for configuration and managing the entire radio system.

## Conventional gateway

The Conventional Channel Gateway (CCGW) enables DIMETRA system users to incorporate conventional channels into their dispatch operations without a separate hardware network and channel banks. Conventional audio is transported between the dispatch consoles and the CCGWs by the same IP network that is used for the trunked audio. Each CCGW in the system can support up to four channels.

## Operator position

The MCC 7500C Dispatch Console operator position hardware consists of a monitor, personal computer, keyboard and mouse.

## Mission Critical Accessories

The MCC 7500C also has a series of mission critical audio accessories including a microphone and speaker or headset as well as a footswitch if required. For more information on the available accessories view the [DIMETRA Mission Critical Dispatch Accessories brochure](#).

### CAPABILITIES

Maximum number of trunking and conventional resources assigned	300
Maximum number of inbound simultaneous audio streams	30
Number of resources per patch group	32
Number of patch groups per dispatch console	16
Number of multiselect groups per dispatch console	3
Number of resources per multiselect group	20

### MONITOR REQUIREMENTS

24" recommended

### SPEAKER MOUNTING OPTIONS

Desktop, furniture mount, or wall mount (with bracket accessory)

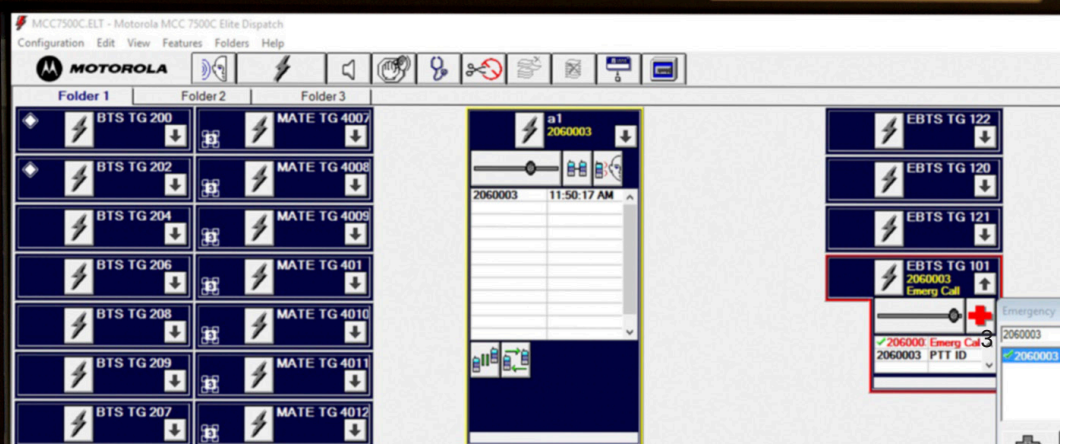
DEVICE CONNECTIONS	CONNECTOR TYPE
One desktop microphone	USB
Desktop microphone PTT	USB
Two headsets	USB
Two desktop speakers	USB
One local logging recorder	USB
One radio instant recall recorder	USB
One Footswitch	USB

### SUPPORTED CONSOLE SITE LINK TYPES

Redundant and non-redundant IP site links are supported

### CERTIFICATIONS

- The various hardware elements of the MCC 7500C Dispatch Consoles are certified to meet the requirements for EN, UL, CSA and CE.
- EMC Emissions International Energy
- Efficiency Level V



SIZE AND WEIGHT				
DEVICE	HEIGHT	WIDTH	DEPTH	WEIGHT
Tower PC	100 mm	337 mm	384 mm	6.44 kg
Rack Mountable PC (1U) + 35 mm for front handles	43 mm	426 mm	574 mm	12.3 kg
HP 24" LCD Monitor (with stand; highest position)	494 mm	539 mm	207 mm	5.7 kg

POWER CONSUMPTION AND THERMAL	
DEVICE	POWER INPUT
Tower PC AC input voltage	90 - 264 VAC
Tower PC AC input frequency	47 - 63 Hz nominal
Tower PC AC input power	38.6W @ 230 VAC
Tower PC operating temperature	10 to 50°C
Tower PC heat dissipation	132 BTU/hr
Rack Mountable PC AC input voltage	100 / 240 VAC nominal
Rack Mountable PC AC input frequency	50/60 Hz nominal
Rack Mountable PC AC input power	105W
Rack Mountable PC operating temperature	+5 to +35°C
Rack Mountable PC heat dissipation	357 BTU/hr
HP 24" LCD Monitor AC input voltage Auto-Sensing	Auto-Sensing 100 - 240VAC
HP 24" LCD Monitor AC input frequency	50-60 Hz nominal
HP 24" LCD Monitor AC input power	18W (typical)
HP24" LCD Monitor heat dissipation	54 BTU/hr @ 230VAC/50Hz
HP 24" LCD Monitor operating temperature	+5 to 35°C

To learn more, visit:

[www.motorolasolutions.com/tetradispatch](http://www.motorolasolutions.com/tetradispatch)



Motorola Solutions Ltd., Nova South, 160 Victoria Street, London, SW1E 5LB, United Kingdom

MOTOROLA, MOTO, MOTOROLA SOLUTIONS and the Stylized M Logo are trademarks or registered trademarks of Motorola Trademark Holdings, LLC and are used under license. All other trademarks are the property of their respective owners. ©2024 Motorola Solutions, Inc. All rights reserved. 06-2024 [EV09]