



# NOTIFY

## ENHANCE COMMUNITY READINESS





# QUICKLY AND CONFIDENTLY RELAY CRITICAL NOTIFICATIONS

At any moment, your team could find themselves in a crisis management situation and critical notifications are fundamental for a successful outcome.

For example, a flash flood has washed out a city road and the community needs to be alerted of evacuation routes immediately. You need a solution that will allow you to prepare for situations like this through features such as templated scenarios, as well as respond effectively during a crisis through the quick distribution of alerts. Once a crisis event has been resolved, your team can review data and reports to evolve and improve future operations.

CommandCentral Notify is an intuitive, cloud-based mass notification solution that delivers on these needs by rapidly relaying crucial information to community members, businesses and emergency responders; helping to prevent injuries, save lives and minimize damage and disruptions.

Notify is designed with organizations like yours in mind to help address challenges that can occur during the emergency notification process. Motorola Solutions has spent thousands of hours researching customer workflows and user interface needs for the CommandCentral platform, in addition to many specialized hours by the Notify team talking to emergency management professionals like you.

## EXPERIENCE THE BENEFITS

### QUICKLY TARGET THE PEOPLE YOU NEED TO REACH

Leverage geographically-targeted areas and pre-built groups for the rapid distribution of critical notifications. Reach your community members and employees using text, voice and email.

### BUILD CONFIDENCE WITH AN INTUITIVE INTERFACE

During the most stressful situations, you can rely on our research-driven, user-friendly interface to provide you with the ability to launch emergency notifications with speed and accuracy.

### STRENGTHEN COMMUNICATION ACROSS YOUR TEAMS

Trust in your ability to communicate among vital public safety teams during emergencies. CommandCentral Notify is built with integration in mind, enabling you to connect with other applications found in your dispatch center and the field for a unified experience.



## EXPERIENCE THE COMPLETE 360° INCIDENT

**CommandCentral Notify** is part of an integrated public safety software suite designed to **connect all data**, **heighten collaboration** and deliver the most **complete view** of an incident, from call to case closure.



## EMERGENCY MANAGER

# PREPARE. RESPOND. EVOLVE.

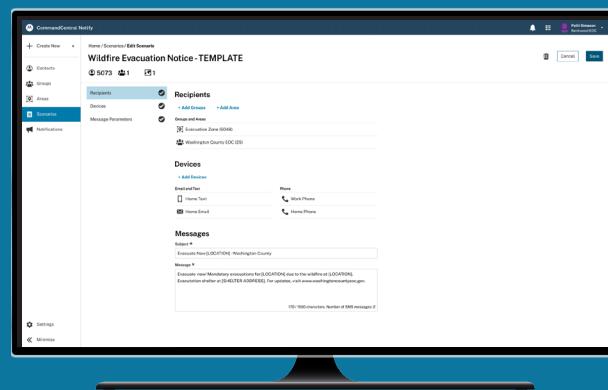
Whether pre-, mid- or post-incident, efficient and effective management of information and resources is crucial to drive successful outcomes. With CommandCentral Notify, you can rapidly deliver critical information to help keep your community safe and responders connected in the moments that matter most.



**Rapidly deliver  
critical information  
to help keep your  
community safe and  
responders connected  
in the moments that  
matter most.**

## PREPARE FOR A CRISIS

No one can ever be completely ready for a crisis event but with CommandCentral Notify, your team can proactively plan for emergency scenarios to keep communities as safe as possible when a crisis occurs.



### ROBUST CONTACT MANAGEMENT

When it's time to click "send," the last thing on your mind should be if your contact information is up-to-date. CommandCentral Notify allows for powerful contact management capabilities that let you quickly update individual contacts or import new contact datasets as needed, providing an accurate set of contacts available to receive and respond to messages during a crisis.

### PRE-BUILT GROUPS AND SCENARIOS

In addition to an updated contact list, your team can be prepared for any emergency situation with pre-built groups and scenarios that are ready for distribution at a moment's notice.

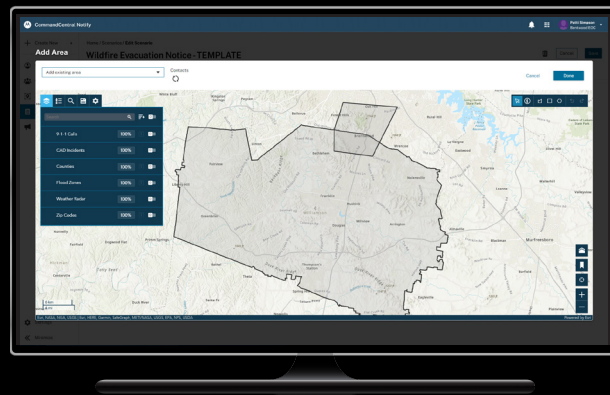
### KEY FEATURES:

- Import your contacts quickly and easily
- Enhance your contact list with Community Self-Registration
- Plan for known risks via pre-defined groups and scenarios
- Use predefined mapping areas to quickly identify geographic areas to notify

**Providing clear and continuous communication during an emergency is key to preventing loss of life and minimizing long-term impacts.**

## RESPOND QUICKLY AND ACCURATELY

Providing clear and continuous communication during an emergency is key to preventing loss of life and minimizing long-term impacts. That's why it's vital to have a solution with robust pre-planning capabilities to reduce some of the variables that happen during an emergency event - so you can focus on delivering critical information to those who need it.



### QUICKLY LAUNCH NOTIFICATIONS

Pre-planning for risks that may impact your organization will enable your operators to respond quickly and accurately when a crisis occurs.

### GIS MAPPING (NO PLUG-INS REQUIRED)

When an emergency happens, it's important to notify community members, businesses and emergency responders who may be affected. CommandCentral Notify provides a powerful, web-based map to quickly select the exact areas at risk and send notifications to the impacted population.

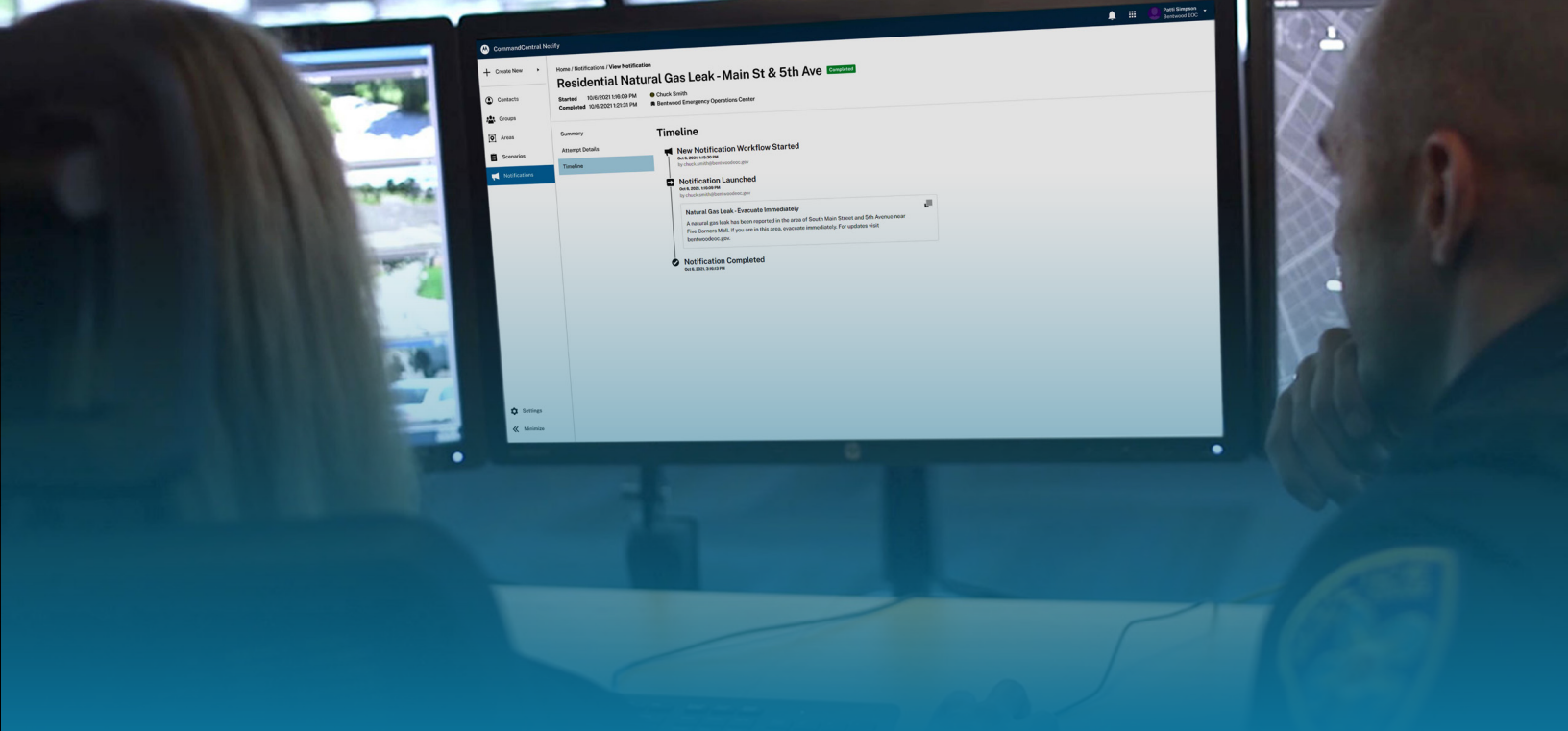
### IPAWS INTEGRATION

CommandCentral Notify IPAWS integration enables urgent communication to reach a broader population— without any opt-in requirement from community members. Quickly distribute critical information to the public through multiple broadcast pathways: Wireless Emergency Alerts (WEA), Emergency Alert System (EAS) and Enhanced Non-Weather Emergency Message (NWEM).

### KEY FEATURES:

- Deliver messages rapidly across different modalities
- Focus on specific geographic areas with high-resolution base maps



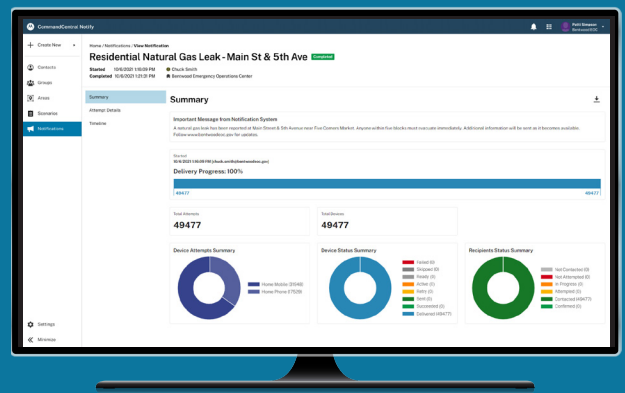


# EVOLVE YOUR OPERATIONS TO CONTINUALLY IMPROVE RESPONSE

After a crisis event has transpired, it's important to evaluate your response and review the steps you took to identify any areas of improvement for future incident responses. With CommandCentral Notify, you can quickly view the success metrics and detailed delivery information for your notifications. The results from reports will help your team evaluate the performance of each notification sent so you can look for opportunities to evolve your operations and responses.

## KEY FEATURES:

- Review statistics and metrics to analyze outcomes for team recommendations
- Examine detailed results to evaluate for workflow and data improvements



## Notify is powered by CommandCentral so your team can:

- Consolidate user management across all of your CommandCentral applications
- Customize user roles and permissions to enable unified access across all applications
- Benefit from industry-leading security that Motorola Solutions has implemented at every level within our applications, cloud infrastructure and operational processes

# COMMAND CENTRAL

CONNECTED. COLLABORATIVE. COMPLETE.



## INCIDENT AWARENESS

COMMUNITY ENGAGEMENT



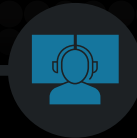
CITIZEN

EMERGENCY CALL MANAGEMENT



9-1-1 CALL TAKER

VOICE & COMPUTER AIDED DISPATCH



DISPATCHER

## INCIDENT MANAGEMENT

REAL-TIME INTELLIGENCE OPERATIONS



INTELLIGENCE ANALYST

FIELD RESPONSE & REPORTING



FRONTLINE RESPONDER

## POST-INCIDENT RESOLUTION

RECORDS & EVIDENCE MANAGEMENT



RECORDS SPECIALIST

ANALYSIS & INVESTIGATION



CRIME ANALYST

JAIL & INMATE MANAGEMENT



CORRECTIONS OFFICER

## THE INDUSTRY'S MOST COMPLETE SOFTWARE SUITE

CommandCentral Notify is the next-generation of integrated mass notification technology. It is built within the CommandCentral platform, providing unified access to all of Motorola Solutions' CommandCentral products which are hosted and managed within our industry-leading, secure cloud platform.

Our CommandCentral software suite is unified with voice, video and analytics, creating the industry's only end-to-end, integrated ecosystem for public safety. Individually, every Motorola Solutions product and service makes the world safer. United, they are exponentially more powerful. Let's build the future of safety together.

For more information about CommandCentral Notify, please visit:  
[www.motorolasolutions.com/notify](http://www.motorolasolutions.com/notify)



Motorola Solutions, Inc. 500 West Monroe Street, Chicago, IL 60661 U.S.A. 800-367-2346 [motorolasolutions.com](http://motorolasolutions.com)

MOTOROLA, MOTO, MOTOROLA SOLUTIONS and the Stylized M Logo are trademarks or registered trademarks of Motorola Trademark Holdings, LLC and are used under license. All other trademarks are the property of their respective owners. © 2021 Motorola Solutions, Inc. All rights reserved. 10-2021