



# Dispatch with a unified view

## Situational Awareness and Computer-Aided Dispatch Software

Ecosystem  
Connections

Dispatchers are tasked with coordinating the right units quickly in rapidly-changing incident environments, and want to help responders in any way they can. By combining CAD functionality with CommandCentral Aware situational awareness software, dispatchers are empowered with visibility across real-time video sources and consolidated mapping all in one place. Packaged neatly to preserve screen real-estate, dispatchers can now provide responders with up-to-date information faster than ever before.

### How it works

When CommandCentral Aware is plugged into an already robust CAD environment, dispatchers are able to take their existing real-time awareness further than ever before. With this integration, live feeds from body cameras, in-car video, fixed video and more are accessible in a single view, with advanced mapping capabilities from CommandCentral Aware. Dispatchers can provide visibility to an incident before backup arrives for greater safety, support and supervision. Supervisors can align user permissions with agency policies.

### Key benefits



#### Find the right camera, faster

Surface insights faster with rules such as automatically streaming cameras near a priority incident.



#### Video in one view

Play video feeds from disparate video sources in one organized view, maximizing screen real estate.



#### One map for situational intelligence

View the caller's location, weather and traffic, CAD event and units nearby - all from one map.

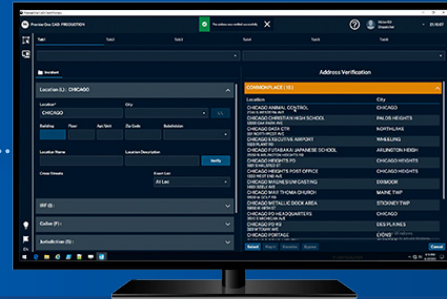
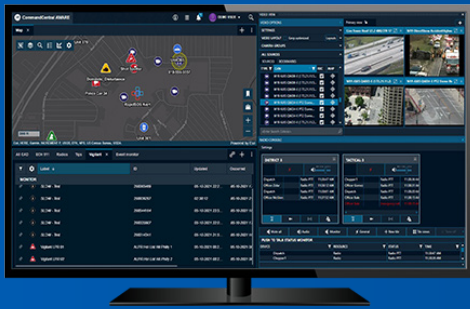


**MOTOROLA SOLUTIONS**

# Key Products And Features

## Situational Awareness Software

Siloed systems make it nearly impossible to effectively leverage your ocean of information. CommandCentral Aware situational awareness software unifies all of your real-time data and video streams into a secure common operational view, automates analysis to surface critical insights and enables instant communication of intelligence to responders in the field.



## Computer-Aided Dispatch Software

Using one shared system, integrated software makes it easy to get the right units to the right people fast, keeping comprehensive and accurate data flowing to each user in the workflow from the very start of an incident. Motorola Solutions' Flex and PremierOne CAD solutions provide the sophistication you need with integration and convenience.

At Motorola Solutions,  
we're solving for safer.

We build and connect technologies to help protect people, property and places. Our solutions enable the collaboration between public safety agencies and enterprises that's critical for a proactive approach to safety and security. Learn more about how we're solving for safer communities, safer schools, safer hospitals, safer businesses - safer everywhere at [motorolasolutions.com/aware](https://motorolasolutions.com/aware) [motorolasolutions.com/cad](https://motorolasolutions.com/cad)



Managed and Support Services



CommandCentral  
Aware



Voice and Computer-Aided  
Dispatch Software



Motorola Solutions, Inc. 500 West Monroe Street, Chicago, IL 60661 U.S.A. [motorolasolutions.com](https://motorolasolutions.com)

MOTOROLA, MOTO, MOTOROLA SOLUTIONS and the Stylized M Logo are trademarks or registered trademarks of Motorola Trademark Holdings, LLC and are used under license. All other trademarks are the property of their respective owners. ©2024 Motorola Solutions, Inc. All rights reserved. 10-2024 [SS02]