

Flex Pictometry Interface

View a structure from multiple angles and measure its dimensions on an electronic map

Multi-angle viewing

The Pictometry Interface allows users to view an image from multiple perspectives using oblique imagery, or high-resolution aerial photography captured at a 45-degree angle, allowing both the top and sides of objects to be visible. Map images can be viewed from the north, south, east, west and from directly above. The ability to view a structure from various angles enables users to quickly determine the size of the structure, identify potential barriers or hazards and view entrances or exits.

Electronic measurements

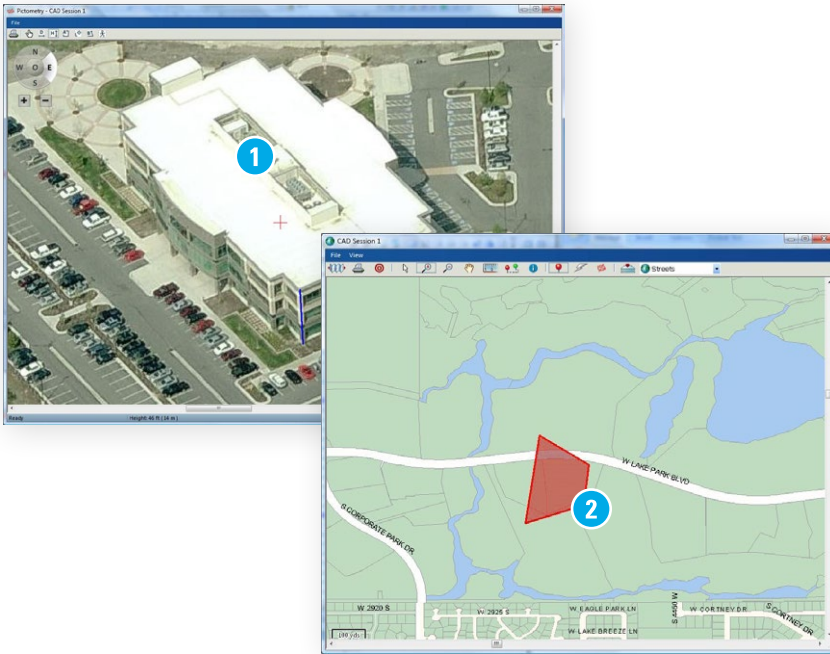
Pictometry users can easily measure the height, area, pitch and distance of an object using a computer mouse. The ability to easily conduct measurements allows field personnel to arrive on-scene with critical information. For example, firefighters can use Pictometry to determine how tall a structure is and what size of ladders are needed. They can measure the distance from a water source to the fire to know the length of hose needed, as well as determine whether a fire apparatus can be driven under bridges or overpasses.

Polygon measuring tool

Users can navigate within the Pictometry map using the polygon feature. A polygon allows users to determine which area on a Flex map is being seen in Pictometry; the area being viewed in Pictometry is represented by the highlighted polygon on the Flex map. The Pictometry map opens in a separate window and features a toolbar and mapping controls.



Navigating the Pictometry Interface



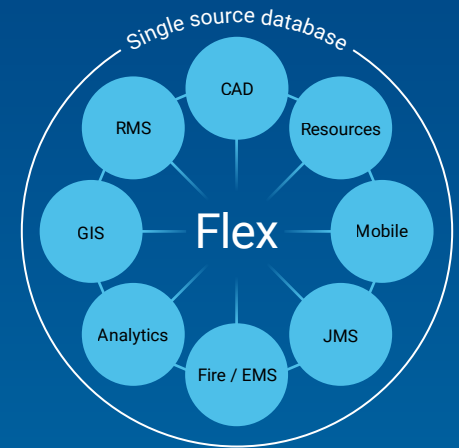
1. Using Flex's Pictometry Interface, users can **view an object from multiple perspectives** and measure its dimensions on an electronic map.
2. A polygon allows the user to **determine which area on a Flex map is being seen** in Pictometry.

Some agencies may already have access to Pictometry imagery for their jurisdictions. These agencies will only require the Flex interface, which allows them to integrate their existing Pictometry images with Flex's mapping software, take measurements and view objects on the map from multiple perspectives. Agencies without Pictometry imagery will need to purchase both Flex's Pictometry Interface and Pictometry imagery of their jurisdictions. For more information, contact your Flex sales representative.

For more information about Flex, visit:
motorolasolutions.com/flex



Motorola Solutions, Inc. 500 West Monroe Street, Chicago, IL 60661 U.S.A. motorolasolutions.com
MOTOROLA, MOTO, MOTOROLA SOLUTIONS and the Stylized M Logo are trademarks or registered trademarks of Motorola Trademark Holdings, LLC and are used under license. All other trademarks are the property of their respective owners. ©2024 Motorola Solutions, Inc. All rights reserved.
01-2024 [CK05]



Total software integration

Flex's Integrated Hub™ is an open, centralized database where all agency information is entered, stored and extracted in real time, providing total software integration. This allows users to enter data once and have it automatically shared among related modules. Agencies using this module can optimize their system and enhance productivity through total integration with other Flex modules.