



Flex CAD Mapping

Locate units and calls on a jurisdictional map

Mobile and GIS integration

By partnering with Geographic Information System (GIS) industry leader, Esri, the Flex system helps your agency view CAD calls on automatically populated jurisdictional maps. When combined with the AVL Mapping module and a Global Positioning System (GPS), all units are displayed in the correct location on the CAD map.

Versatile design

When using Flex's Computer-Aided Dispatch (CAD) tools, dispatchers can route a unit to a call directly from your agency's map by dragging the unit symbol over the call symbol, or vice versa. Users can also dispatch a call to a unit by entering the command into the CAD command line. New calls can be automatically centered on the map, giving dispatchers quick access to the most pressing situations. And with Flex, maps follow the user, so dispatchers keep their personal map preferences regardless of the console they use.

Customizable maps

Flex's CAD Mapping module can be configured to suit your agency's preferences to provide more flexibility in managing how maps display information. Color schemes automatically update on maps to accurately represent the priority and status of calls and units. You can customize the CAD map by adding optional map layers for street and city detail, such as adding a fire zone layer to display all fire zones within your jurisdiction.

Flex helps to ensure your agency's positive return on investment by proactively engaging in defining NG9-1-1 protocol and standards. Motorola Solutions participates in the APCO Emergency Incident Data Document (EIDD), NENA NG9-1-1 working groups, as well as the IJIS Springboard EIDD CAD2CAD Initiative.



Enhanced features

Flex's CAD Mapping module is Phase I and Phase II wireless compliant, providing reverse geocoding capabilities. This means when a caller dials 9-1-1 from a mobile phone, Phase I dispatch systems will capture the X,Y coordinates of the cellular tower used for that call. Phase II dispatch systems will triangulate coordinates from three cellular towers to get an approximate location of the caller, with no third-party setup required. Flex's CAD Mapping module then takes those X,Y coordinates and provides a list of nearby locations such as apartment complexes, businesses or street addresses for the dispatcher to use.

The Flex CAD Map now allows Motorola Solutions' CallWorks to display active 9-1-1 calls on the map. Icons displayed on the map show: the phone number making the 9-1-1 call, the location of the call, the class of service (cell, landline, VOIP) via a symbol and status of the call (ringing, active, hold, etc.) via a color. For more information on this product integration, contact your sales representative.

Accessible call and unit data

Flex's maps are tightly integrated with the CAD system, allowing your agency to access a full range of information about an address as well as time-saving features like common place names and reverse geocoding. Right-clicking on a call or unit symbol on the map allows dispatchers to easily access the Display Call or Unit Information screen. The call screen provides dispatchers with call number, nature, address, complainant and assigned officers.

Hyperlinked resources

The Hyperlink function allows you to quickly access and embed information into the map from multiple related types of records, which can be viewed on both the CAD map and mobile device maps. Users can access files like name or address records and include feeds from web cameras, traffic cameras, building floor plans and other documents or images. Agencies can even link to the URL of a security camera to pull up live feeds from traffic, bank or school security cameras.

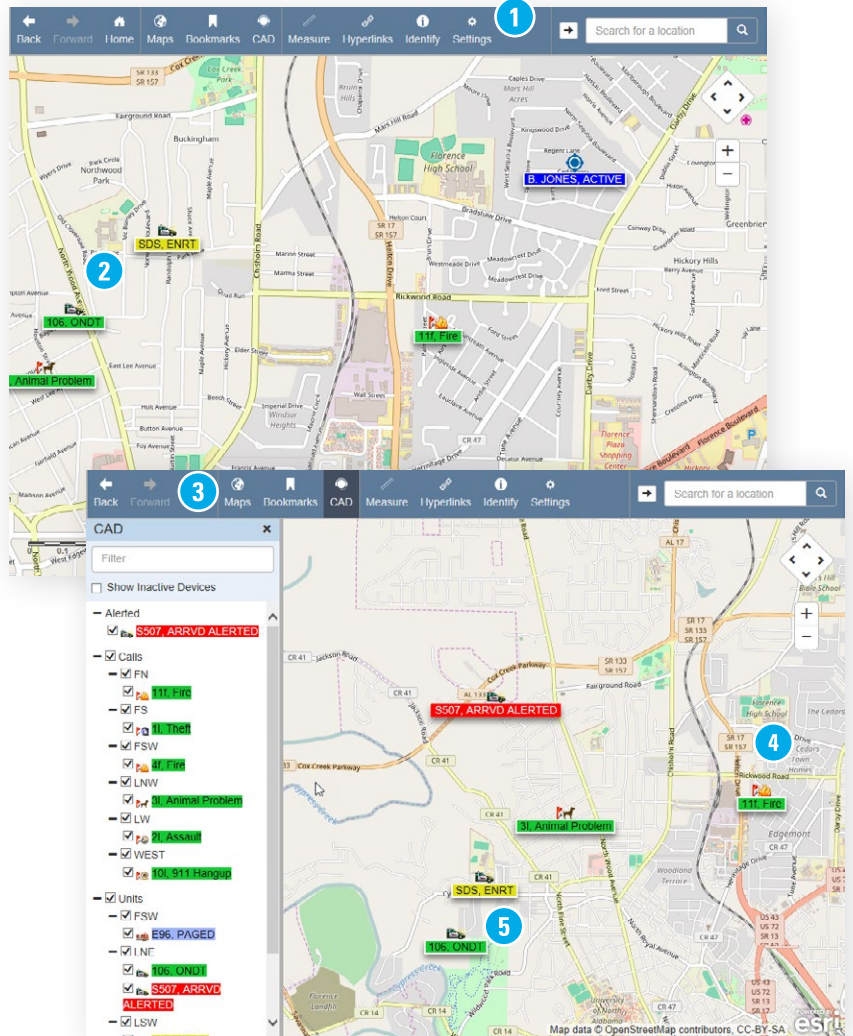
Easy-to-use mapping toolbar

The CAD Mapping toolbar on the CAD Map screen allows you to quickly zoom in, zoom out, pan, display the entire map and change map layer properties. When dispatchers position the mouse pointer over a toolbar button, a Tool Tip appears, reminding them of the button's function. Dispatchers can also control the map from the CAD command line. Map icons are customizable by both unit type and nature.



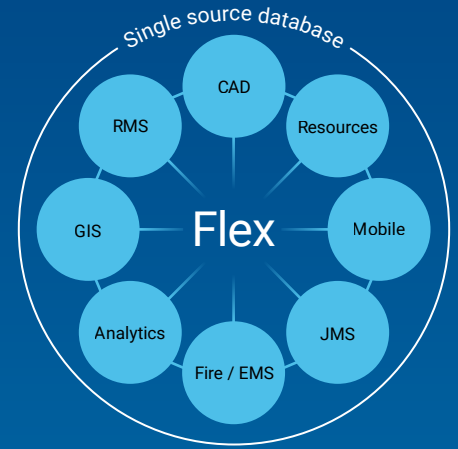


Navigating the CAD Mapping module



1. The **Mapping Toolbar** allows users to change map layer properties, zoom in and zoom out, hide or show CAD calls and unit symbols and more.
2. Users can **easily view additional information** such as call number, call nature, address, cross streets, contact person, and incident number by right-clicking a call or unit.
3. Agencies can **customize jurisdictional map screens** by adding as many layers as needed, centering new calls on the map, and changing the color of map elements.
4. Agencies using Flex's E9-1-1 Interface can **see critical location information** already integrated onto the Flex CAD map.
5. Dispatchers can **drag and drop a unit symbol over the call symbol**, or vice versa, to dispatch a unit to a call.





Total software integration

Flex's Integrated Hub™ is an open, centralized database where all agency information is entered, stored and extracted in real time, providing total software integration. This allows users to enter data once and have it automatically shared among related modules. Agencies using this module can optimize their system and enhance productivity through total integration with other Flex modules.

For more information about Flex, visit:
motorolasolutions.com/flex



Motorola Solutions, Inc. 500 West Monroe Street, Chicago, IL 60661 U.S.A. motorolasolutions.com

MOTOROLA, MOTO, MOTOROLA SOLUTIONS and the Stylized M Logo are trademarks or registered trademarks of Motorola Trademark Holdings, LLC and are used under license. All other trademarks are the property of their respective owners. ©2024 Motorola Solutions, Inc. All rights reserved.

01-2024 [CK06]