



INTERCEPT MORE VEHICLES OF INTEREST

COMMANDCENTRAL AWARE AND VIGILANT VEHICLEMANAGER INTEGRATION

CHALLENGES

Chasing investigative leads can take hundreds of hours and thousands of dollars away from your agency. Leads get colder and colder every minute that passes; the more time that goes by, the less likely the suspect is found. In fact, due to declining resources and increasing violent crime, the homicide clearance rate in the U.S. is at an all time low.

SOLUTION

Take immediate, meaningful action on vehicle leads by integrating CommandCentral Aware and Vigilant VehicleManager. With these two products working together, you can increase visibility of hot hit detections, improve your response with real-time intelligence and optimize future workflows to intercept more vehicles.

BENEFITS

INCREASE VISIBILITY TO HOT HIT DETECTIONS

Allow more users across your operation to be made aware of hot hits by deploying CommandCentral Aware. Trigger visual or audible alerts and automated workflows for hot hit detections like centering the location on the map or even opening nearby fixed video feeds. Directly access details like plate number as well as the detection image.

COORDINATE AN INTELLIGENCE-LED RESPONSE

In CommandCentral Aware, analysts can directly initiate a search in Vigilant VehicleManager for popular historical locations of the vehicle of interest. With the ability to see real-time officer locations, they can then coordinate an encompassing response to the hot hit location as well as nearby locations that the vehicle could be heading towards.

OPTIMIZE YOUR FUTURE HOT HIT RESPONSES

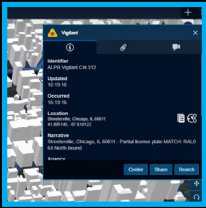
Review a historical map-based replay of all events and officer actions that occurred in response to the hot hit detection. Even access and replay nearby recorded fixed video. The data to recreate the response is available for up to 90 days and can be exported and referenced as a part of an after-action report or used for future training purposes.



KEY FEATURES

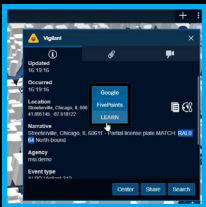


See hot hit detections on the CommandCentral Aware map and in the event monitor



Review hot hit detection details from map or monitor including:

- Time and date
- Camera location
- Plate number
- Detection image



Initiate license plate number search in Vigilant VehicleManager from detection details panel

OTHER FEATURES

- View LPR camera locations on CommandCentral Aware map
- Create workflow automations and alerts based on hot hit detections
- View hot hit detections alongside other data on historical map

COMMANDCENTRAL AWARE + VIGILANT VEHICLEMANAGER IN ACTION

Glendale AZ's RTCC helped investigators track down a suspect that police reported shot a seven year old girl.

"We were able to go camera to camera as [the suspect] was going Eastbound... and see where the vehicle last traveled... and then run a [license plate recognition (LPR)] query to get a match on a vehicle that was similar. And our detectives were able to follow up and locate that car."

- **Officer Tiffany Ngalula, Glendale AZ Police Department**

"It's been a game-changer for us in how we go about our daily business. It's providing a sense of awareness out in the field that we did not have before."

- **Asst. Chief Colby Brandt, Glendale AZ Police Department**

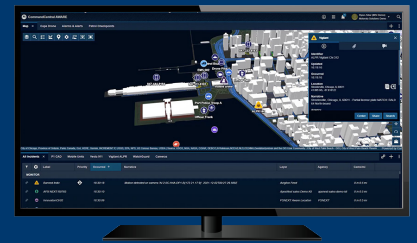
MOTOROLA SOLUTIONS

We're reimagining the world of public safety. Our mission-critical ecosystem integrates communications, software and video on a single platform to amplify connectivity between technology and teams. By integrating CommandCentral Aware and Vigilant VehicleManager, we're helping ensure leads on vehicles of interest are quickly recognized and more effectively responded to. When everything works together, safety is unstoppable.



Motorola Solutions, Inc. 500 West Monroe Street, Chicago, IL 60661 U.S.A. 800-367-2346 [motorolasolutions.com](https://www.motorolasolutions.com)

MOTOROLA, MOTO, MOTOROLA SOLUTIONS and the Stylized M Logo are trademarks or registered trademarks of Motorola Trademark Holdings, LLC and are used under license. All other trademarks are the property of their respective owners. © 2022 Motorola Solutions, Inc. All rights reserved. 11-2022 [BG04]



COMMANDCENTRAL AWARE



VIGILANT VEHICLEMANAGER

FOR MORE INFORMATION,
SCAN OR CLICK BELOW:

[CommandCentral Aware](#)



[Vigilant VehicleManager](#)

