



ENERGY PROTECT

TRANSFORM YOUR OPERATIONS WITH ACTIONABLE INTELLIGENCE FOR SITUATION MANAGEMENT

Operations depend on access to reliable, secure, and real-time data to maintain continuity of enterprise processes and adapt to new demands. You need a streamlined and intuitive way to operationalize tremendous amounts of data and multimedia from disparate systems including: video sources, voice communications, emergency response plans, department database queries, SCADA/IIoT systems, sensors, resource location tracking, alerts, and more. Converting information into actionable response is vital to the safety and security to everyone working in an organization's facilities. Motorola Solutions' Energy Protect solution provides data that is streamlined into a common operating picture, customized to your operations. Enhance your operations using actionable intelligence to secure your facility and keep personnel and assets safe.

STREAMLINE OPERATIONS

What if your critical communications and operational data sources were streamlined into a single intuitive operating position? What if you could instantly send out targeted emergency messages, warning tones or mass notifications at a moment's notice? What if a standard operating procedure (SOP) relevant to a triggered situation could be automatically displayed without even clicking a button? What if you could be one step ahead of any incident that could turn into an emergency? Energy Protect provides real-time integration of your disparate operational, communications, security and SCADA data sources used in your operations center to improve decision-making and achieve safer outcomes.

NERC CIP COMPLIANCE

With fines and penalties reaching up to \$1 million/day, there is no time to lose in closing NERC CIP security gaps. In many cases, bringing an organization into compliance yields additional benefits in efficiency and effectiveness. One of the most valuable but often underutilized assets, data, can be put to good use addressing NERC CIP requirements. For example, CIP-014 is about protection against physical attacks. Data from surveillance video, sensors, access control and other relevant sources, if monitored, processed and analyzed quickly, can significantly minimize the risks of oversight AND false alarms while improving security staff efficiency.

As an integrated solution designed to automate the critical security processes of monitoring different data sources, analyzing for insights, and triggering appropriate actions Energy Protect can help address CIP requirements such as CIP-005, CIP-006, and CIP-014.

More specifically, Energy Protect:

- ✓ Enhances situational awareness and situation management by centralizing security monitoring and operation.
- ✓ Automates notification and escalation of important events and situations.
- ✓ Ensures consistent and compliant incident responses through embedded action plans and workflows.
- ✓ Provides detailed reporting data to ease the audit and reporting processes.
- ✓ Provides business intelligence tools to better understand incidents and incident response across a security enterprise both historically and in real time.



MOTOROLA SOLUTIONS

FEATURES

REAL-TIME VIDEO AGGREGATION & MANAGEMENT

Virtually monitor your facility with nearly unlimited simultaneous camera views from fixed, body-worn, recorded, or real-time mobile video feeds, all aggregated into one position from multiple video management systems (VMS), even from different vendors. Easily reference the video source, date, time and location with full reporting and auditing for after action analysis.

SENSOR DETECTION AND ALERTING

Receive real-time alerts from SCADA systems and sensors including intrusion detection systems, perimeter sensors, access control systems, gunshot detection systems, cybersecurity, and weather alerts to support proactive enforcement and more informed coordinated emergency response. Physical security access control mechanisms: control and monitoring of door locks, fire alarms, turnstiles / man-traps, vehicle barriers, duress buttons, and vault sensors.

IDENTITY MANAGEMENT SYSTEMS

Incorporate biometrics, card scanners, and other facility perimeter and intrusion identification mechanisms, facial and gait recognition, including interfaces to external databases.

STANDARD OPERATING PROCEDURE (SOP)-CENTRIC & DYNAMIC WORKFLOWS

Define highly configurable workflows and procedures unique to your environment. Integrate and scale existing applications to support, streamline, and complete workflows. Create action plans that define sequences of steps within Energy Protect that guide security and operations personnel through a series of actions when reacting to situations. The situation log created while executing an action plan records all actions taken during the response. Action plans implement an organization's established best practices and are unique to each Energy Protect environment.

UNIFIED VOICE AND DATA COLLABORATION

Integrate LMR communications to monitor and communicate directly with field personnel and distribute actionable intelligence through voice. Also, integrate push-to-talk applications (WAVE) to allow units to communicate regardless of device (computer, smartphone, and tablet), frequency or dependencies.

PERIMETER DETECTION

Actively monitor gates, entry points, and perimeter by having sensors and video detect any disturbance or breach and alert security immediately.

MASS NOTIFICATION

Activate automatic or manual alerts with several Mass Notification Systems (MNS) via SMS/MMS, email, LMR (voice and text), pre-recorded or text-to-speech telephone calls, smartphone applications, computer desktop pop-ups, social media, cable TV channels, notification boards, and other signage with the push of a button to inform personnel of the threat condition.

VIDEO INTELLIGENCE/SYNOPSIS

Integrate video analytics solutions to analyze events in real-time and trigger appropriate workflows or review hours of recorded footage in minutes to quickly identify events, behavior and objects or people of interest. Filter based on object color, direction, size, speed and other characteristics.

MOBILE CLIENT VIDEO AND PHOTO UPLOAD

Send short video clips and images to personnel in the field to support situational awareness.

ADVANCED SEARCH AND QUERY

Query personnel, records systems, and databases to quickly extract intelligence.

GEOSPATIAL MAPPING

Visualize all available data including camera locations, sensors, CAD incidents, field personnel, social media and more on an intuitive map that can be customized with your organization's mapping layers. 2D and 3D mapping available.

ACTIVITY LOG

Audit all actions performed by the operator in a summary view to meet investigation and legal requirements, support training, and provide transparency to the community.

RULES & CORRELATION ENGINE

Automatically or manually associate related data from disparate physical and cyber data for a more comprehensive threat assessment while providing staff and management with simplified dashboard and reporting capabilities.

ON PREMISE. SCALEABLE. PROTOCOL AGNOSTIC.

Manage data no matter the volume, allowing installations to add or reduce data sources regardless of installation size.

PRODUCT IMAGES



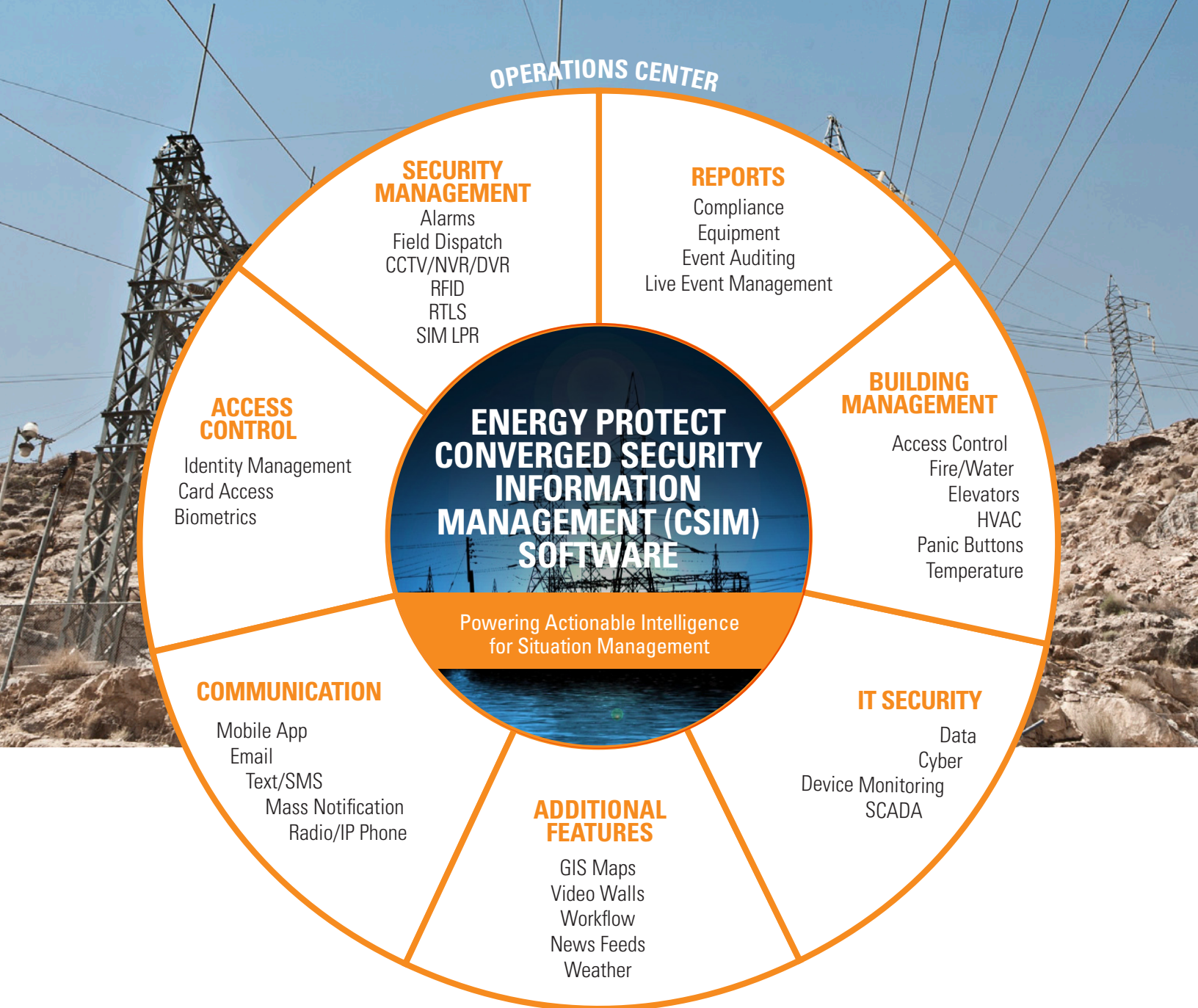
Electrical Supply Failure



License Plate Recognition



Dual Presence



INVEST FOR TODAY AND THE FUTURE

Energy Protect not only provides complete situational awareness in your facility operations center environment by integrating all of your existing data and systems but situation management as well. By integrating all existing investments in camera systems, SCADA systems, applications and data streams, your operations can incorporate previously isolated data sources to create a comprehensive view and streamlined workflows for true situation management.

OUTCOME OF OPERATIONS

A safe and secure facility depends on personnel and technology working seamlessly together. With a secure, on-premise CSIM platform, organizations can achieve a big-data enhanced operating picture that provides more reliable and accurate information. Teams managing facility operations and security will gain heightened situational awareness and situation management by having instant access to critical information, and respond more quickly and intelligently to situations and threats. Not only will teams have the ability to collaborate more effectively, they will also be able to seamlessly share information with other facilities. Energy Protect is the solution that takes all your facility's data sources and integrates them into one unified picture, ultimately streamlining your operations.

ENHANCE YOUR OPERATING PICTURE

Energy Protect is built to aggregate real-time information across facility operations for enhanced information sharing, collaboration, and analysis. Now your operations staff, threat analyst, physical security officer and other security personnel can have instant access to real-time alerts, mass notifications, records and communications. Safeguard your facility with the power of Energy Protect.



Energy Protect is a unified platform that meets security and network compliance standards for facility security and operations. It increases situational intelligence by aggregating and analyzing data from multiple inputs into one common operating picture, making the data meaningful and actionable. Energy Protect helps you to be your best in the moments that matter.

For more information about Energy Protect contact your Motorola representative or visit

MotorolaSolutions.com/Energy

Partnered with 

 **MOTOROLA SOLUTIONS**

Motorola Solutions, Inc. 500 W. Monroe Street Chicago, IL 60661 U.S.A. 800-367-2346 MotorolaSolutions.com

MOTOROLA, MOTO, MOTOROLA SOLUTIONS and the Stylized M Logo are trademarks or registered trademarks of Motorola Trademark Holdings, LLC and are used under license. All other trademarks are the property of their respective owners.
©2018 Motorola Solutions, Inc. All rights reserved. 06-2018