



# PROTECT YOUR COMMANDCENTRAL SUITE WITH MANAGED DETECTION AND RESPONSE

## CYBER ATTACKS CAN LEAD TO REDUCED AVAILABILITY AND BREACHES

Although the CommandCentral software suite has been designed to be secure, the infrastructure around it is complex. This can put public safety agencies at risk from threats like ransomware that can take computer-aided dispatch (CAD) servers and workstations offline, or vulnerabilities that can allow attackers to enter unnoticed and move laterally across your IT network.

## STAY AHEAD OF THREATS

Client workstations and servers in public safety agencies are often multi-purpose. As a result, they can be taken offline by ransomware or other cyber threats targeting CAD systems and their surrounding infrastructure, leading to loss of confidentiality via data exfiltration or compromised communications. Patching and OS hardening are still necessary, but no longer sufficient: to maintain maximum availability, you need continuous monitoring to find and mitigate potential risks quickly, and to contain advanced threats.

Our Managed Detection and Response services can monitor CommandCentral suite, as well as IT network infrastructure and systems, 24/7. Our Advisory Services can identify gaps via risk assessments, tabletop exercises, pentesting and other consulting engagements. In addition, because we monitor public safety networks 24/7, we are uniquely positioned to provide threat intelligence specific to them. This gives us deep insights to better protect against threats targeting these systems and agencies.

## SYSTEMATIC APPROACH TO MITIGATE RISKS



### DETECT

Proactive event monitoring and automated alerts



### ANALYZE

Real-time analysis correlation



### INVESTIGATE

Incident investigation and evaluation



### REPORT

Advanced data analytics



## 24/7 MONITORING AND EXPERTISE

Motorola Solutions' Security Operations Center (SOC) has experienced, highly-trained and certified security professionals staffed 24/7 dedicated to monitoring mission-critical systems. Using automation and analytics, our ActiveEye security platform can quickly pinpoint real threats while reducing false positives and omissions, enabling your team and our analysts to focus on the most important issues.

## ENHANCED SECURITY FOR COMMANDCENTRAL SOFTWARE SUITE

If an attacker attempts to breach your existing security controls, it is critical to be able to respond quickly. Our Managed Detection and Response capabilities for CommandCentral software suite include Endpoint Detection and Response (EDR) on CAD workstations and servers to look for anomalies that can indicate previously unknown attacks or insider threats. Integrating EDR tools with our ActiveEye platform enables security analysts to respond to attacks and view threat intelligence in a single interface. SOC analysts can isolate hosts, and block, allow or remove files.

## CO-MANAGED SINGLE PANE OF GLASS VIEW

Our cloud-based ActiveEye platform provides a single pane of glass for your operations team to monitor the security of your infrastructure, ensuring you're always in the loop. Whether you prefer to communicate via Slack, Teams, PagerDuty, email or phone, the ActiveEye team can easily stay in touch with your team. As a co-managed security solution, the ActiveEye platform ensures you have 24/7 visibility and can see what our SOC analysts see. You can perform your own investigations and data analysis as needed or if you prefer, have our SOC analysts manage this.

## PROTECT CLOUD, ENDPOINTS AND IT NETWORKS

Our SOC team uses our ActiveEye platform to investigate and respond to cyber threats wherever they appear. In addition to CommandCentral suite, we can protect other endpoints in your IT network to block most threats and take immediate action to stop anything that makes it through from spreading. We can also monitor your IT networks, cloud applications and infrastructure to detect and respond to new threats and attack vectors.

## MOTOROLA SOLUTIONS — YOUR TRUSTED PARTNER

As a leading provider of mission-critical solutions, we understand your mission can only be as secure as your partners enable you to be. Our goal is to provide you with transparency, accountability and security that's built-in from the start.

We believe that our set of highly knowledgeable people with industry certifications, best-in-class organizational policies and procedures and state-of-the-art automation and analytics tools enables us to uniquely deliver enhanced cybersecurity solutions that address your needs today and in the future.

### GLOBAL SCALE & EXPERIENCE

# 300+

SECURITY EXPERTS  
FOCUSED ON 24/7  
MONITORING &  
RESPONSE

# 9B

SECURITY EVENTS  
PROACTIVELY  
MONITORED EACH DAY

# 100%

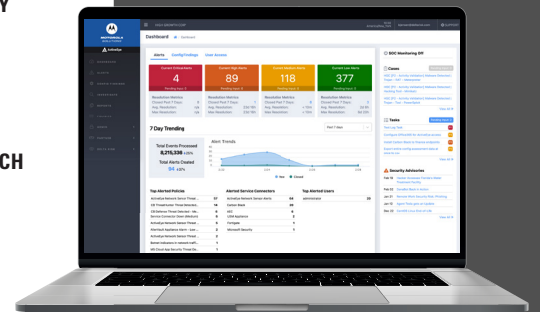
CO-MANAGED APPROACH  
FOR VISIBILITY AND  
CONTROL

# 20+

YEARS OF EXPERIENCE  
DEVELOPING  
CYBERSECURITY  
SOLUTIONS

### GET COMPLETE VISIBILITY INTO YOUR SYSTEM

Our advanced security platform provides a comprehensive view of your systems, networks and more. Log in anytime to see a snapshot of what's happening in your environment and what actions have been taken to protect vital assets.



Our SOC analysts can detect and respond to threats 24/7 so you can focus on your mission.

For more information on Cybersecurity Services contact your Motorola Solutions representative or visit us at [www.motorolasolutions.com/cybersecurity](http://www.motorolasolutions.com/cybersecurity)

