



FEEL RIGHT AT HOME IN A MOBILE WORLD

MCC 7100 IP DISPATCH CONSOLE

Mobile dispatch functionality allows you to manage the flow of information from anywhere in the field with an Internet connection. Deploy the MCC 7100 IP Dispatch Console as a permanent or mobile solution without sacrificing any of the functionality and capability you count on to coordinate and inform first responders.

TAKE IT WITH YOU

The MCC 7100 IP Dispatch Console provides a full console interface experience anywhere inside or outside of your radio network. It can operate as a permanent, back up or mobile solution, with the same functionality as the MCC 7500 IP Dispatch Console.

The United Nations estimates that in 2015, roughly 375 million people will be affected by climate related disasters every year, well above the 263 million believed to have been directly impacted just 4 years ago. With city centers becoming increasingly populated, the direct impact of disasters on people, infrastructure and local or national economies will increase.

- United Nations Disaster Report, 2013

Whether for a planned event or immediate emergency response, command a wealth of information for high-impact results. Connect to responders with voice, Talkgroup Text Message and tone communication on ASTRO® 25 trunked and conventional systems.

DISPATCH APPLICATION ECOSYSTEM

The ability to integrate Motorola Solutions and other third party dispatch applications with the MCC 7100 console API, creates a dispatch environment that helps you meet the needs of your first responders.

Motorola Solutions Certified Logging Recorders

The Motorola Solutions certified NICE and Verint Logging Recorders provide seamless dedicated recording for the MCC 7100 console to improve productivity and offer post incident insights to your operations. They are the only recording solutions that meet all of the extensive Motorola Solutions performance specifications required to be implemented on the ASTRO 25 IP network.

PremierOne™ Computer Aided Dispatch

PremierOne CAD integrates with the MCC 7100 console to streamline workflows, minimize key strokes and reduce input error for more dispatch efficiency. Your personnel can operate within a single interface and from one mouse and keyboard to receive 9-1-1 calls, manage an incident response and communicate critical information to responders in the field.

Advanced Messaging Solution

The Advanced Messaging Solution builds upon the Talkgroup Text Messaging capability of the MCC 7100 console, further enhancing responder decision-making abilities by facilitating two-way texting between dispatch and the field. When voice communication is not an option, Advanced Messaging Solution provides responders with critical information, right at their fingertips, on portable radios or broadband devices.

APX Personnel Accountability

Streamline on-scene roll calls and gain the confidence to make critical decisions with an easy to use single screen view showing the status of all on-scene personnel. Rapidly execute evacuation orders to quickly alert your team to changing situations and see that everyone acknowledges.

EASE OF USE MAKES FOR MORE EFFECTIVE SUPPORT

First responders don't know or care where your dispatchers are. Yet, they need the same high level of responsiveness in each and every emergency. Based on the Gold Elite graphical user interface (GUI) look and functionality, the MCC 7100 console allows dispatchers to quickly adapt to a new system with a short learning curve and minimal training.

The customizable GUI design, a replica of the MCC 7500, helps your dispatchers become more efficient and productive using purpose-designed workflows with minimal click-throughs, critical resource information displays and contextual right-click menus. It is also beneficial for switching seamlessly between the two

consoles enabling dispatchers to provide the same level of service every time, with no additional training. Extra features are designed specifically to enable a smooth transition. The Integrated Instant Recall Recorder helps maintain typical dispatch operation without extra equipment or installations and the optional Audio Interface Module (AIM) facilitates use of purpose-built dispatch accessories if desired in place of commercial off-the-shelf USB accessories. With the MCC 7100, you'll maximize your effectiveness in coordinating and informing first responders, from anywhere.

THE INTELLIGENCE YOU NEED, EVERY TIME, ALL THE TIME

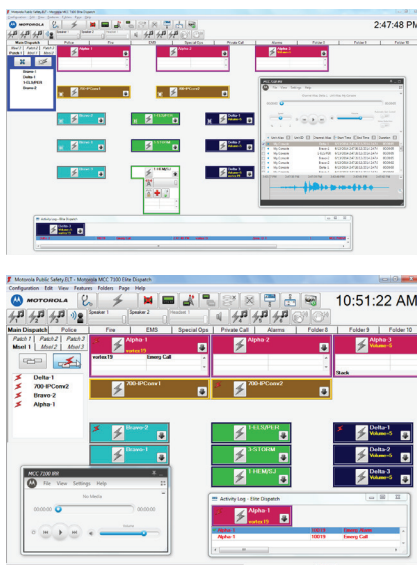
First responders rely heavily on dispatch for support. They need to be confident that your team can always offer the right information and coordination when an emergency arises. The inherent reliability and security of the ASTRO 25 system ensures first responders and dispatchers stay connected with best-in-class audio quality. For peace of mind that the right information always gets through, rely on the MCC 7100 console's smart voice prioritization and intelligent audio routing capabilities at your dispatch positions. Furthermore, continuous link and resource polling gives your dispatchers the confidence that once connected they stay connected.

SCALE UP YOUR SYSTEM NOT YOUR COST

If your public safety agency is like most others, money is tight for you right now.

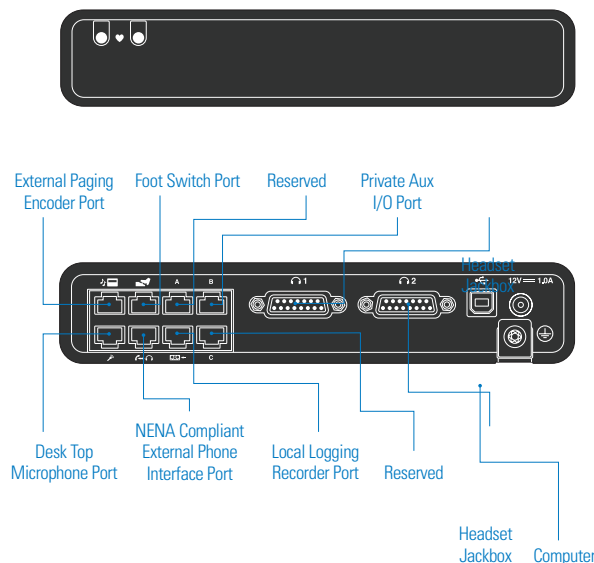
78% of state and local criminal justice agencies reported federal budget funding cuts from 2010 to 2013, with **67%** of those agencies reporting cuts greater than 10%.

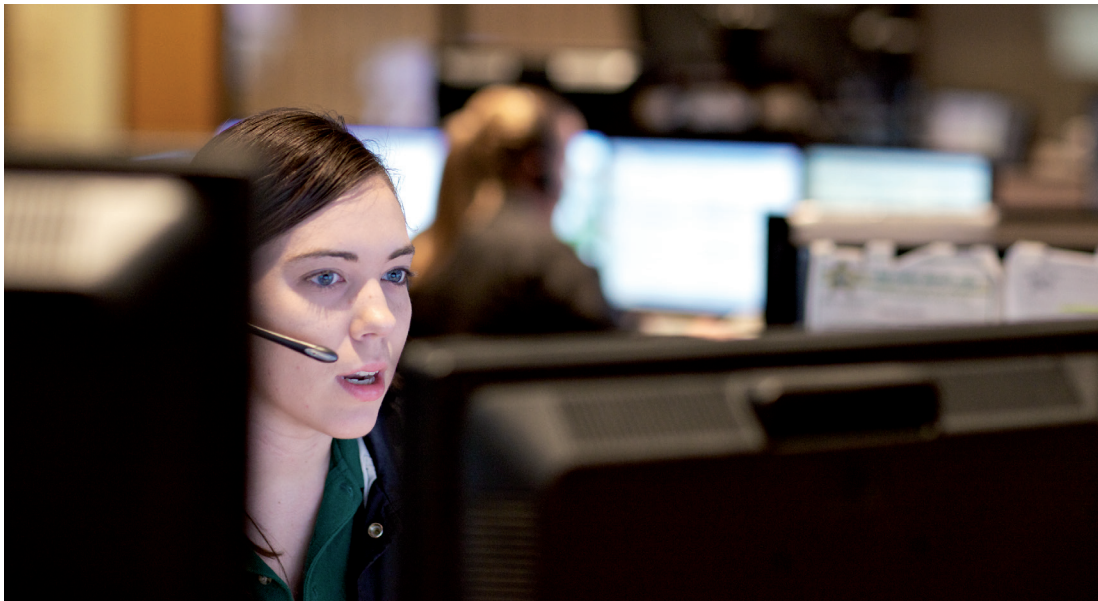
- VERA Institute of Justice



Tailor the MCC 7100 Console to your needs with the customizable user interface

Audio Interface Module (AIM)





The MCC 7100 console is a cost effective, completely software-based solution. Flexible deployment options reduce physical space requirements and system management does not require specialized hardware knowledge. New functionality and expanded capacity arrive via software updates - upgradeable from a centralized, single point of contact. This cuts down on the time, expense and inconvenience of growing or managing your system.

You can scale to the needs of your organization now and into the future with licensed capacity of 5, 10, 15 or 20 simultaneous audio streams. Deploy the MCC 7100 console incrementally with interoperation in legacy ASTRO 25 console systems and the with the MCC 7500, for even more installation flexibility.

SOLUTION COMPONENTS

MCC 7100 Console Positions

The MCC 7100 console connects directly to the radio system's IP transport network without gateways or interface boxes. Vocoding and encryption are performed within each software-based operator position. MCC 7100 consoles functions as an integrated component of the total radio system without additional centralized electronics.

The MCC 7100 console position can be comprised of a computer with just a headset, or operate with a traditional desktop computer and monitor with a keyboard, mouse / trackball / touchscreen, up to 8 assignable speakers, and audio accessories.

Audio Accessories

Commercially available USB connected accessories that have been tested for optimal audio quality are supported.

Compatibility

For users who need to conduct dispatch activity and other tasks on a single computer, the MKM 7000 Console Alias Manager Client, ASTRO 25 Advanced Messaging Solution and Microsoft® Office are also approved for installation.

Channel Capacity Licenses

Channel capacity licenses are available for 5, 10, 15 or 20 encrypted or unencrypted simultaneous voice streams (channels). The licenses provide monitoring ability of 15, 30, 45, and 60 resources, respectively.

Capacity licenses are issued for the life of the product and continue in force when the system is upgraded.

Remote Operation

Full dispatch capability is provided when operating outside of the ASTRO 25 Network. The MCC 7100 console supports firewall controlled access for up to 20 channels into the secure ASTRO 25 network from the Customer Enterprise Network (CEN).

For remote access with additional security, virtual private network (VPN) access is also supported through the CEN.

SPECIFICATIONS

System Compatibility	ASTRO® 25 System	
Vocoder Algorithms Supported	AMBE, (IMBE is compatible with AMBE), G.728 (for Analog Conventional)	
Encryption Algorithms Supported	AES (256 bit), DES-OFB, ADP (Advanced Digital Privacy)	
MCC 7100 IP Dispatch Console Capacities	Console Resides on the ASTRO 25 Network	Console Resides Outside the ASTRO 25 Network
Simultaneous Audio Sessions per Console	5, 10, 15 or 20 license options	5, 10, 15 or 20 license options
Bandwidth Requirement per Channel	35 kbps	35 kbps
Simultaneous Encryption/Decryption Sessions per Secure Capable Console	5, 10, 15 or 20	5, 10, 15 or 20
Multi-Select Groups per Dispatch Console	Up to 4 (with up to 20 Members per Multi-Select group)	Up to 4 (with up to 20 Members per Multi-Select group)
Patch Groups per Dispatch Console	Up to 4 (with 8 members per patch group)	Up to 4 (with 8 members per patch group)
Monitored Resources per Dispatch Console	Up to 60	Up to 60

USB AUDIO INTERFACE MODULE SPECIFICATIONS

Before you mount and install the USB Audio Interface device (AIM), verify that you meet the environmental requirements necessary for the device to operate.

	Connector type	Device
Audio Interface Module (AIM)	RJ45	One desktop gooseneck microphone, one local logging recorder, one external telephone headset, one external paging encoder, one footswitch, and support for four private Aux I/O's.
	DB15	Two headset jacks connectors.
Dimensions (H x D x W)	1.69 x 5.23 x 8.39 in (43 x 133 x 213 mm)	
Weight	1.43 lbs (0.65 kg)	
AC Operating Voltage for the USB AIM Power Supply	90 VAC - 264 VAC	
Minimum Input Voltage	90 VAC with 57-63 Hz	
Maximum Input Voltage	264 VAC with 47-53 Hz	
Typical Input Voltages	115 VAC and 230 VAC	
DC Operating Voltage for the USB AIM Device	12 VDC (nominal)	
Maximum Power Consumption	0.5 A at 12 VDC (6 Watt)	
Operating Temperature	5°C (41°F) – 40°C (104°F)	
Storage Temperature	-25°C (-13°F) – 70°C (158°F)	
Relative Humidity Operating	0% – 90% relative humidity at 40°C non-condensing	
Certifications	CE	ICES-003
	CMM EPUF 50	EN 609 50 - 1 : 2006 + A11 : 2009 + A1 : 2010 + A12: 2011
	EAC	EN55022 :2010
	Safety	EN55024 :2010
	CSA 60950-1-07 2011-12	EN 61000-3-2:2006 +A1:2009 +A2:2009
	UL 60950-1 2011	EN 61000-3-3:2008
	IEC 60950-1 2005	Energy Efficiency
	EMC Emissions & Immunity	International Energy Efficiency Level V
	FCC part15B Class B	(PVM power supply only)

Motorola Solutions, Inc. 500 West Monroe Street, Chicago, Illinois 60661 U.S.A. motorolasolutions.com/dispatch

MOTOROLA, MOTO, MOTOROLA SOLUTIONS and the Stylized M Logo are trademarks or registered trademarks of Motorola Trademark Holdings, LLC and are used under license. Microsoft, Windows, Windows Me and Windows Vista are registered trademarks of Microsoft Corporation in the United States and other countries. All other trademarks are the property of their respective owners. © 2016 Motorola Solutions, Inc. All rights reserved. 11-2016

