

# IMPRES™ SMART ENERGY BATTERIES



TALK LONGER, WORK SMARTER AND SPEND LESS IN THE LONG RUN



# CHEAP BATTERIES COME WITH A HIGH PRICE

If you buy batteries on the initial purchase price alone, you could end up spending more in the long run. **While other brands may look the same, their quality and performance vary dramatically.** The technology inside makes a big difference in how they impact the performance of your radio and how often they have to be charged.

If you're not using IMPRES™, your batteries may need constant recharging, stop working when your people need them most or even damage your radio. And that's a high price to pay on what you've invested in your valuable two-way radio system.

"In the long run, IMPRES batteries are considerably cheaper than other batteries because they're more reliable and they last longer."

Keith Lippert,  
Communications  
Operations Supervisor  
City of Madison,  
Wisconsin

## IMPRES BATTERIES LAST A LOT LONGER, AND SAVE YOU A LOT MORE

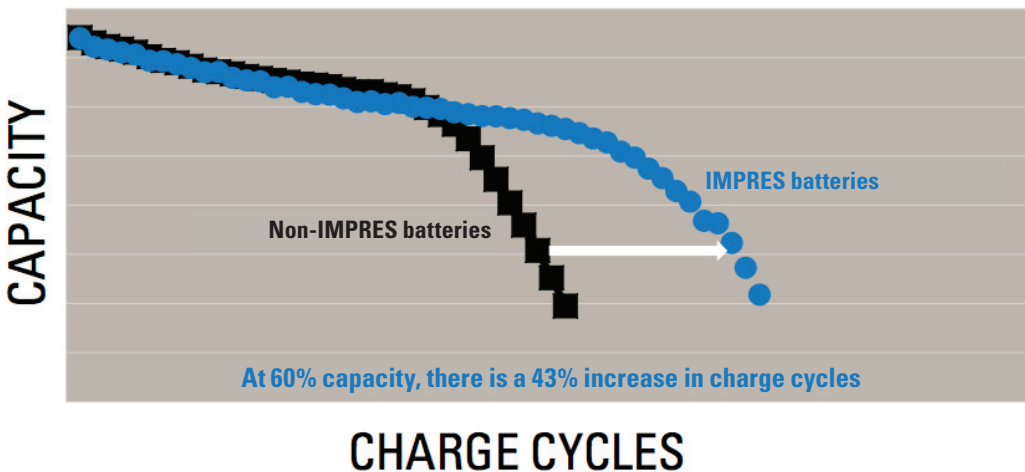
Are you overbuying batteries? Many administrators do because they're uncertain if their batteries will work or unsure when they need to be switched out. They replace at predetermined intervals or give workers spare batteries just in case.

**IMPRES enables you to reduce the number of spare batteries you buy and increase the time before you need replacement batteries.**

Only IMPRES batteries can be charged 150 additional times compared to a standard battery – a 43% increase in charge cycles. If you charge radios two to three times a week, you'll likely get more than an extra year out of every IMPRES battery.

Investing in IMPRES is designed to save you money because you buy fewer batteries over the life of the radio and have fewer disruptions to operations.

### ONLY IMPRES BATTERIES CAN BE CHARGED 150 ADDITIONAL TIMES AND LAST 43% LONGER



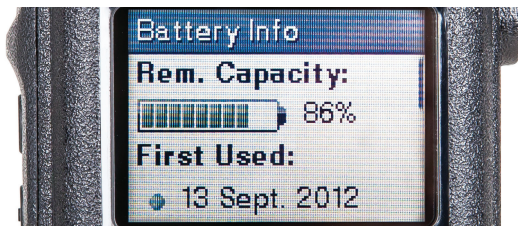
## IMPRES BATTERIES CAN HELP YOU TALK LONGER AND WORK SMARTER

It's critical for your workers to know that a fully-charged battery will last the entire shift. How do you know which batteries to replace – if you don't have time to put them through an analyzer?

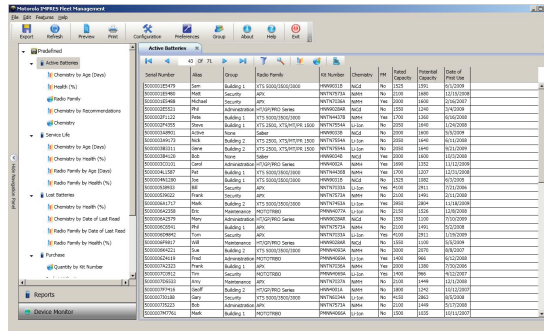
**IMPRES shows you exactly how much capacity is left, so you can squeeze every bit of energy out of IMPRES batteries.**

With IMPRES, you can know battery capacity instantly, because if your radio or charger has a display, it shows you the exact capacity available. You can be more confident your radio battery is ready to go.

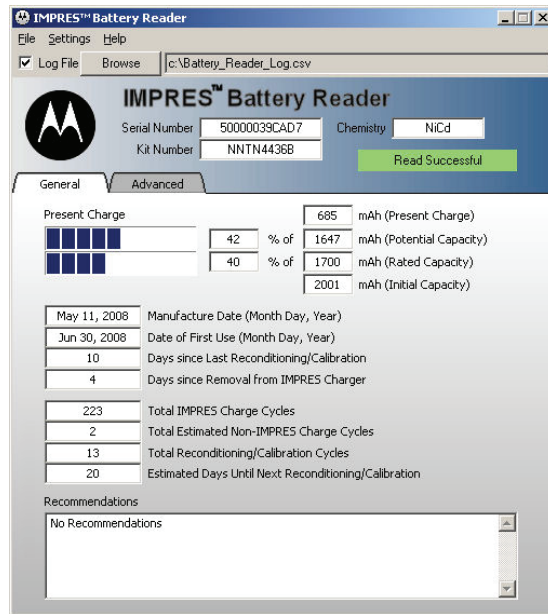
And with the unique IMPRES Battery Reader and IMPRES Battery Fleet Management systems, you can more efficiently manage your batteries with real world data not available with other manufacturers' batteries. These easy-to-use software applications let you know if there is enough capacity for a full shift, alert you to low capacity batteries so you can remove them, prevent downtime and eliminate throwing batteries out prematurely.



**BATTERY INFORMATION AVAILABLE ON THE MOTOTRBO XPR 7550**



### IMPRES BATTERY FLEET MANAGEMENT



**IMPRES BATTERY READER**

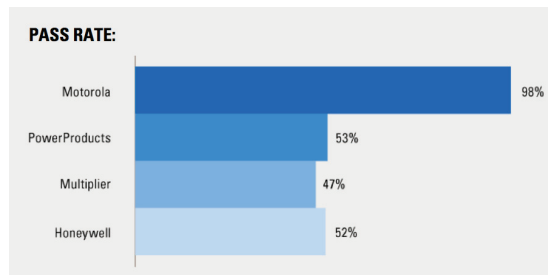
## MOTOROLA BATTERIES PERFORM BETTER TO HELP YOUR WORKERS STAY SAFER

Whether your people are pursuing a suspect or patrolling a power plant, you can't shortchange their safety. Their radio is their lifeline and if the battery fails, so do they.

**Motorola batteries survive day-to-day abuse and the hazards of the workplace.**

In test after test, Motorola batteries outperform the rest – twice as tough as other brands. We design, build and rigorously test every battery to the same high standards as our radios to withstand dust, water, knocks, drops, shocks and more. An innovative circuit design protects against overcharging and electrical shock. And since select Motorola batteries are certified "intrinsically safe" for use with our radios, you can be confident they'll work in the stressful environments of your work place.

Motorola batteries help keep your workforce safer and your costs in check. Only our batteries are backed by 4-year warranty, twice as long as most leading competitive batteries.\* When you invest in safety and productivity with Motorola and with IMPRES, it does pay off.



\* Our warranty protects against any defects in workmanship for four years.

## RADIO MODELS AND COMPATIBLE IMPRES™ BATTERIES

### APX™ 7000, APX 6000, APX 7000XE, APX 6000XE

Battery Part Number	Battery Description	Special Features
PMNN4403	2150 mAh Li-Ion slim	IP67 - Submersible
NNTN8092	2300 mAh Li-Ion	Rugged - Submersible, Intrinsically Safe
NNTN7038	2900 mAh Li-Ion	IP67 - Submersible
NNTN7034	4200 mAh Li-Ion high capacity	Rugged - Submersible
NNTN7033	4100 mAh Li-Ion high capacity	Rugged - Submersible Rated to -30 C, Intrinsically Safe
NNTN7035	2000 mAh NiMH	Rugged - Submersible, Intrinsically Safe

The batteries listed above are designed to be charged in the following IMPRES chargers  
 WPLN7080 – IMPRES Single-Unit Charger  
 NNTN7586 – IMPRES Dual-Unit Charger  
 NNTN7593 – IMPRES Dual-Unit Charger with Displays  
 NNTN7065 – IMPRES Multi-Unit Charger  
 NNTN7073 – IMPRES Multi-Unit Charger with Displays  
 NNTN7624 – IMPRES Vehicular Charger  
 NNTN7686 – Insert for WPLN4108/4130 XTS Multi-Unit Charger  
 NNTN7687 – Insert for NTN1873/WPLN4111 XTS Single-Unit Charger

### APX™ 4000

NNTN8128	1900 mAh Li-Ion slim	IP67 - Submersible
NNTN8129	2300 mAh Li-Ion	IP67 - Submersible, Intrinsically Safe
PMNN4424	2300 mAh Li-Ion	IP67 - Submersible

The batteries listed above are designed to be charged in the following IMPRES chargers  
 WPLN4232 – IMPRES Single-Unit Charger  
 WPLN4212 – IMPRES Multi-Unit Charger  
 WPLN4219 – IMPRES Multi-Unit Charger with Displays  
 NNTN7616 – IMPRES Vehicular Charger  
 NNTN8170 – Insert for WPLN4108/4130 XTS Multi-Unit Charger  
 NNTN8169 – Insert for NTN1873/WPLN4111 XTS Single-Unit Charger

### ASTRO® DIGITAL XTS® 5000, XTS 3500, XTS 3000

Battery Part Number	Battery Description	Special Features
NTN9862	2750 mAh Li-Ion Slim	
NNTN6034	4150 mAh Li-Ion high capacity	Rated to -30 C
NNTN7453	3950 mAh Li-Ion high capacity	IP57 - Submersible, Intrinsically Safe
PMNN4093	3000 mAh NiMH high capacity	
NNTN4435	1800 mAh NiMH	
NNTN4436	1700 mAh NiMH	Intrinsically Safe
NNTN4437	1700 mAh NiMH	IP57 - Submersible, Intrinsically Safe

### THE FOLLOWING HARDWARE AND SOFTWARE APPLICATIONS SUPPORT ALL IMPRES BATTERIES LISTED ABOVE

#### IMPRES Battery Fleet Management

NNTN7676 IMPRES Battery Fleet Management Software  
 HKVN4036 IMPRES Battery Fleet Management Entitlement Key  
 NNTN7677 Multi-Unit Charger Interface Unit (CIU)  
 NNTN8045 Single-Unit Charger Interface Unit (CIU) – not compatible with WPLN4111 (XTS Single Unit Charger)

#### IMPRES Battery Reader

NNTN7392 IMPRES Battery Reader Package – includes battery reader hardware, system software, USB cord, adapter inserts for MOTOTRBO, HT-series and APX.

### ASTRO DIGITAL XTS 2500, XTS 1500, MT 1500™, PR1500

Battery Part Number	Battery Description	Special Features
NNTN7554	2050 mAh Li-Ion slim	IP67 - Submersible
NNTN7335	2700 mAh Li-Ion	IP67 - Submersible
NTN9858	2100 mAh NiMH	
NTN9857	2000 mAh NiMH	Intrinsically Safe
NNTN6263	2000 mAh NiMH	IP67 - Submersible, Intrinsically Safe

All Astro Digital XTS batteries are designed to be charged in the following IMPRES chargers  
 WPLN4111 – IMPRES Single-Unit Charger  
 WPLN4108 – IMPRES Multi-Unit Charger  
 WPLN4130 – IMPRES Multi-Unit Charger with Displays  
 WPLN4208 – IMPRES Vehicular Charger

### MOTOTRBO™ (XPR™ 6500, XPR 6550, XPR 6580, XPR 6300, XPR 6350, XPR 6380)

Battery Part Number	Battery Description	Special Features
PMNN4066	1500 mAh Li-Ion	IP57 - Submersible
PMNN4069	1400 mAh Li-Ion	IP57 - Submersible, Intrinsically Safe
PMNN4077	2150 mAh Li-Ion	IP57 - Submersible

### MOTOTRBO™ (XPR 7550, XPR 7350, XPR 3500, XPR 3300)

Battery Part Number	Battery Description	Special Features
PMNN4407	1500 mAh Li-Ion slim	IP67 - Submersible
PMNN4409	2150 mAh Li-Ion high capacity	IP67 - Submersible
NNTN8129	2300 mAh Li-Ion high capacity	IP67 - Submersible, Intrinsically Safe

These batteries are designed to be charged in the following IMPRES chargers

WPLN4232 – IMPRES Single-Unit Charger  
 WPLN4212 – IMPRES Multi-Unit Charger  
 WPLN4219 – IMPRES Multi-Unit Charger with Displays  
 NNTN7616 – IMPRES Vehicular Charger

### PROFESSIONAL SERIES (HT1250, HT1250.LS, HT1250.LS+, HT1550.XLS, MTX850, MTX850.LS, MTX8250, MTX950, MTX9250, PR860)

Battery Part Number	Battery Description	Special Features
HNN4003	2350 mAh Li-Ion	
HNN4001	1800 mAh NiMH	
HNN4002	1700 mAh NiMH	Intrinsically Safe

The batteries listed above are designed to be charged in the following IMPRES chargers

WPLN4182 – IMPRES Single-Unit Charger  
 WPLN4187 – IMPRES Multi-Unit Charger  
 WPLN4192 – IMPRES Multi-Unit Charger with Displays  
 NNTN7618 – IMPRES Vehicular Charger

<sup>1</sup> International Protection (IP) is a global standard for rating dust and water protection. The first digit IP5x or IP6x represents increased levels of dust protection, while the second digit, IPx7 represents withstanding submersion in 1 meter of fresh water for 30 minutes.

<sup>2</sup> Rugged batteries exceed industry standards (IPx7) for submergibility and provide a higher level of water protection – MIL-STD-810E, Method 512.3 (Immersion). These batteries meet the incremental requirement of submersion in 1 meter of fresh water that is 27C colder than the product for 2 hours.

<sup>3</sup> Intrinsically Safe: Motorola approved batteries are a critical part of the specific radio and accessory system certified by a recognized testing organization as intrinsically safe. Use of non-Motorola approved batteries could result in equipment that is unapproved or unsafe in a hazardous environment.