



ASTRO MCG 8000 CONVENTIONAL CHANNEL GATEWAY

Everyday, ASTRO® radio systems are relied upon to provide critical communications for a variety of Government and enterprise organizations. Each ASTRO system is designed to meet the specific needs of the organization it serves. The MCG 8000 Conventional Channel Gateway (CCGW) supports a variety of interfaces and is the workhorse for connecting conventional sites into ASTRO systems.

The MCG 8000 CCGW provides the interface between the IP network and conventional sites by translating voice and data into the format needed for each individual site type. It serves as the control point between the master site and the site devices. The MCG 8000 communicates with the ASTRO Zone Controller at the master site for proxy control of the site device and it passes voice and signaling

payload between dispatch consoles and site devices and between the dispatch console and consolets. For packet data, the MCG 8000 passes control information and packet data payload between the Radio Network Gateway and the stations and comparators.

PHYSICAL INTERFACES

- Circuit
- Serial
- Ethernet

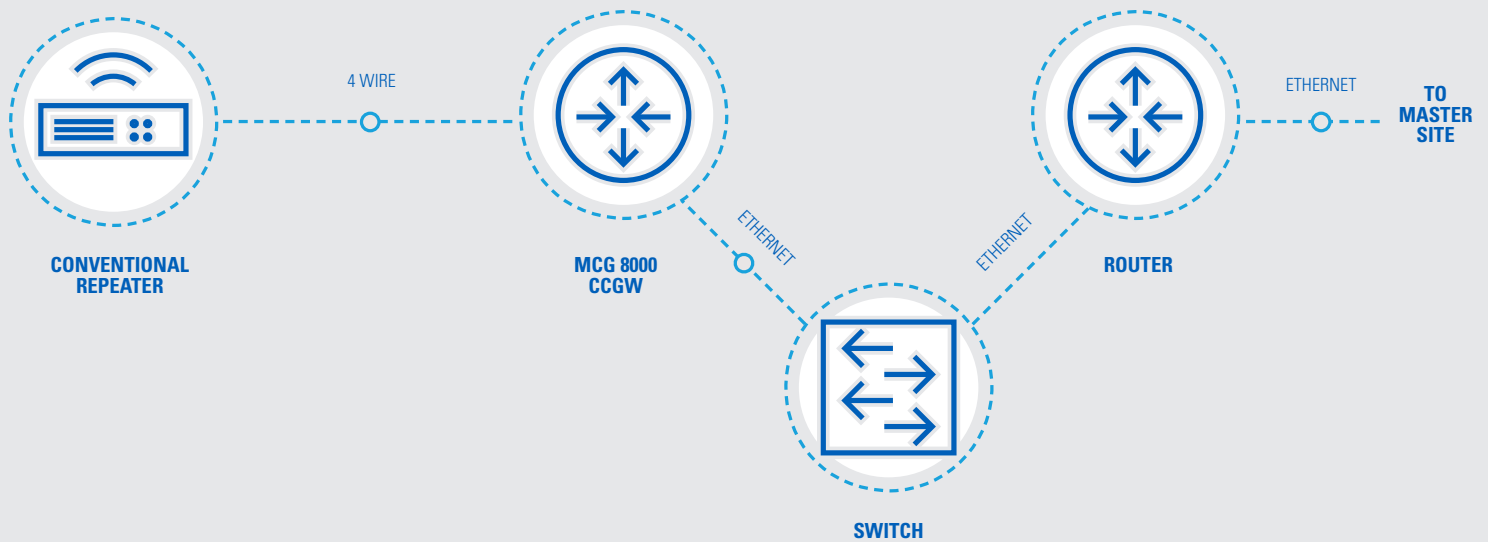
SITE TYPES

- Conventional-only site
- Dispatch site
- Distributed conventional hub site
- Distributed conventional base radio site
- Repeater site
- Simulcast prime site
- Simulcast subsite

CHANNEL TYPES

- Analog conventional
- Analog IP conventional
- MDC 1200 conventional
- MDC 1200 IP conventional
- Digital V.24 conventional
- Digital IP conventional
- Mixed mode conventional
- ASTRO Conventional Interface Module (ACIM)





PHYSICAL AND ENVIRONMENTAL SPECIFICATIONS

Dimensions (W x H x D)	44 x 4.3 x 37 cm (17.3 x 1.7 x 14.6 in)
Weight	7.3 kg (16 lb)
Temperature	-30°C to 60°C (-22°F to 140°F) operating -40°C to 85°C (-40°F to 185°F) non-operating
Humidity	5% to 95% non-condensing
Heat Dissipation	134 BTU/hour (maximum)
Power Consumption	48 Watts (maximum)
AC Power Operation Range	100 to 230 VAC (-10%, +6%), 50/60 Hz
AC Power Current Draw	Less than 0.50 A at 120 VAC; Less than 0.25 A at 220 VAC
DC Power Operating Range	24 VDC to 48 VDC (source); 20 VDC to 60 VDC maximum
DC Power Current Draw	Less than 2.0 A at 24 VDC; Less than 1.0 A at 48 V

CAPACITIES

INTERFACE TYPES	BASE UNIT CAPACITY (MAX)	CAPACITY WITH ENHANCED CCGW MODULE (MAX)
Maximum number of channels per MCG 8000 chassis ¹	16	32
IP Conventional (Analog, MDC1200 or Digital)	16	16
Analog	N/A	8
Digital Conventional	N/A	8
Mixed Mode ²	N/A	8
MDC 1200	N/A	8
ACIM	N/A	8

1. 32 conventional channels consists of 8 analog + 8 V.24 + 16 IP conventional.

2. Either analog + V.24 (V.24 mixed mode) or analog + IP (IP mixed mode).

For more information, please visit us on the web at: motorolasolutions.com/astro



Motorola Solutions, Inc. 500 West Monroe Street, Chicago, IL 60661 U.S.A. motorolasolutions.com

MOTOROLA, MOTO, MOTOROLA SOLUTIONS and the Stylized M Logo are trademarks or registered trademarks of Motorola Trademark Holdings, LLC and are used under license. All other trademarks are the property of their respective owners. © 2022 Motorola Solutions, Inc. All rights reserved. 09-2022 [EV02]